

MAGVIA MINI



MAGNITECH
LIGHTING INDUSTRIES

Die-Cast Aluminium Streetlight



20W

3,845
lumens

30W

5,545
lumens

40W

6,925
lumens

50W

8,305
lumens



MAGNITECH
LIGHTING INDUSTRIES

Die-Cast Aluminium
Streetlight

SABS
ISO 9001

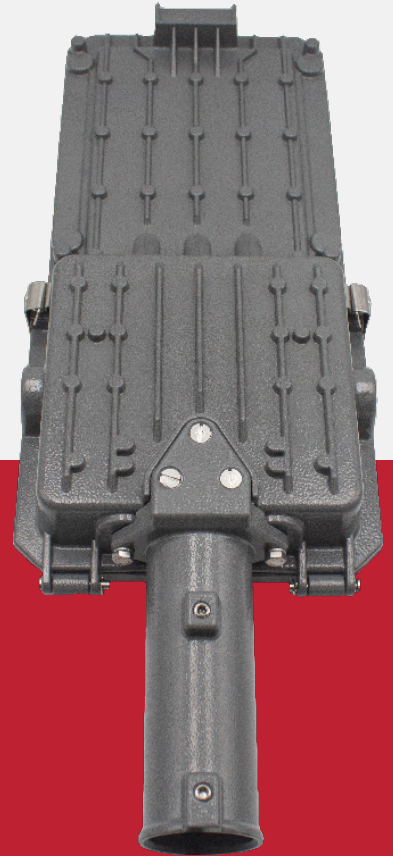
Hello **Performance!**

A compact and reliable LED streetlight ideal for residential and urban applications. Its slim, robust design reduces wind load and installation costs, while the smooth profile minimises dirt and debris build-up. With excellent photometric performance, the MAGVIA MINI delivers long-term efficiency and clean aesthetics for public environments.

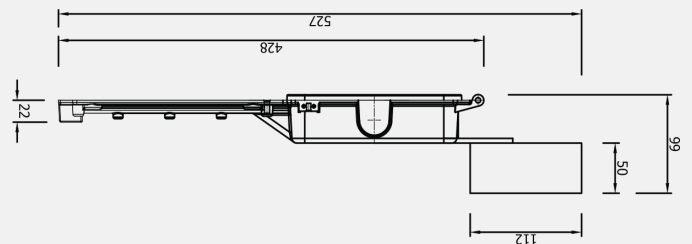


Fit-For-Purpose:

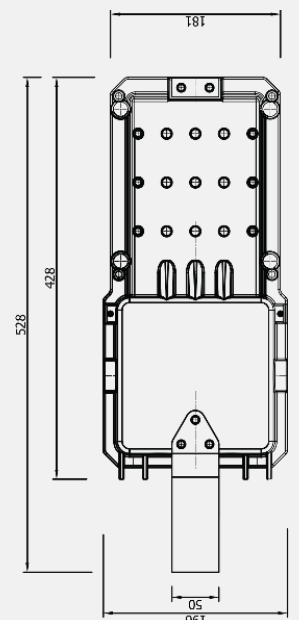
- Street lighting – Class A & B Roadways
- Outdoor Lighting
- Security Lighting
- Town & City Centres
- Parking Areas
- General Amenity



Description	Length	Width
MAGVIA MINI (Pole Mounting)	528mm	196mm

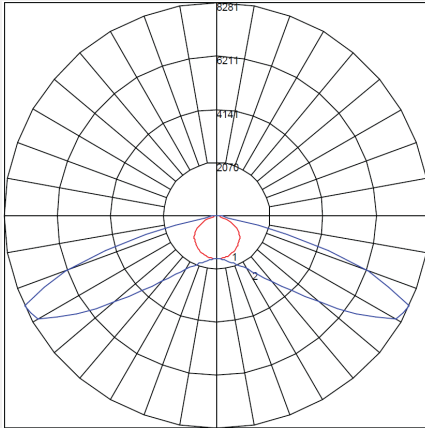


INCREDIBLE
LED PERFORMANCE

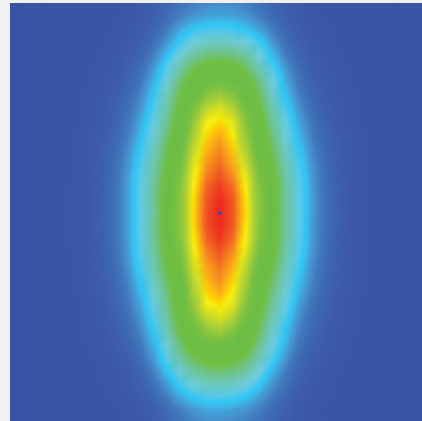




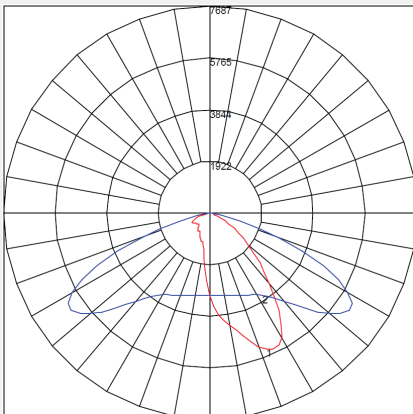
IES ROAD REPORT
PHOTOMETRIC FILENAME : MAGVIA MINI T1 OPTICS.IES
POLAR GRAPH



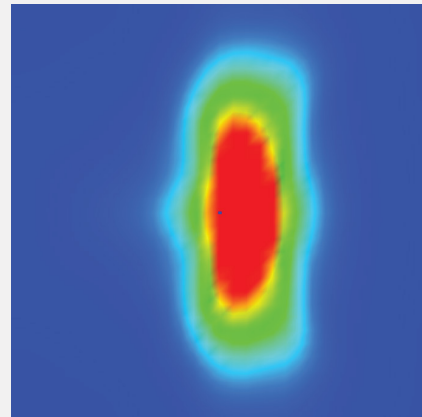
Maximum Candela = 8281.214 Located At Horizontal Angle = 270, Vertical Angle = 65
#1 - Vertical Plane Through Horizontal Angles (0-180)
#2 - Vertical Plane Through Horizontal Angles (90-270)



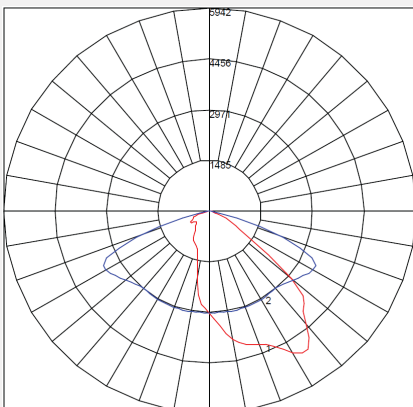
IES ROAD REPORT
PHOTOMETRIC FILENAME : MAGVIA MINI T2 OPTICS.IES
POLAR GRAPH



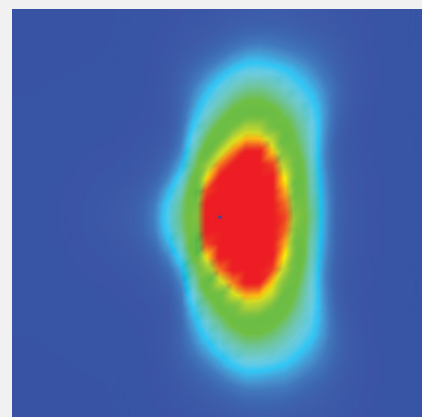
Maximum Candela = 7687.185 Located At Horizontal Angle = 277.5, Vertical Angle = 55
#1 - Vertical Plane Through Horizontal Angles (0-180)
#2 - Vertical Plane Through Horizontal Angles (90-270)



IES ROAD REPORT
PHOTOMETRIC FILENAME : MAGVIA MINI ME OPTICS.IES
POLAR GRAPH



Maximum Candela = 5941.734 Located At Horizontal Angle = 292.5, Vertical Angle = 55
#1 - Vertical Plane Through Horizontal Angles (0-180)
#2 - Vertical Plane Through Horizontal Angles (90-270)





FEATURE	MLEDM020	MLEDM030	MLEDM040	MLEDM050
NOMINAL POWER	20 Watts	30 Watts	40 Watts	50 Watts
NOMINAL FLUX (LM)	3845 Lumens	5545 Lumens	6925 Lumens	8305 Lumens
NOMINAL EFFICIENCY (LM/W)	192	181	174	166
*LUMINAIRE OUTPUT FLUX (LM)	3076	4436	5540	6644
LUMINAIRE OUTPUT RATIO	154	145	139	133
NUMBER OF LEDS	16	24	24	24
COLOR TEMPERATURE	4000K (STANDARD) 2200K / 3000K / 5000K / 6000K (OPTIONAL)			
LED LIFETIME (HOURS) @ TA 25 °C	L90B10 > 100 000 HRS			
CRI	>70			
DIFFUSER	Glass - IK08 (Standard) Polycarbonate - IK09/10 (Optional)			
NOMINAL INPUT VOLTAGE	220V-240V (STANDARD) 90V-305V (OPTIONAL)			
OPERATING TEMPERATURE	-20°C to 60°C			
SURGE PROTECTION	10kV (Standard) 20kV (Optional)			
IP RATING	IP66			
WEIGHT (BOX)	3.2KG			

* Values shown are AFTER both Thermal and Optical losses. Output will vary depending on optics utilised. Performance values are subject to ±5% variance.

Product Code Logic

MLEDM	-	M	XXX	-	X	X	X	-	X	X
FAMILY NAME			WATTAGE		CT	OPTICS	MOUNTING		EMERGENCY	ZONE RATING
			020 = 20W		2 = 2200K	0 = No Optics	3 = Spigot fitted 42 Diameter		0 = Standard	0 = Standard
			030 = 30W		3 = 3000K	1 = T1			E = Emergency	2 = Zone 2
			040 = 40W		4 = 4000K	2 = ME				3 = Zone 20/21
			050 = 50W		5 = 5000K	3 = FT				
					6 = 6000K	4 = T2				
						5 = T4				
						6 = ME Wide				

Due to continuing R&D, the above data may change without prior notice. Please consult us for the latest available options. Warranties subject to our standard terms and conditions of sale. Visit our website for our full product range - www.magnitech.co.za.

Related Products



iLangaLED Maxi



iLangaLED



Pathfinder I

MAGNITECH - BENCHMARKING
THE STANDARD OF **QUALITY**



MAGNITECH
LIGHTING INDUSTRIES

MAGNITECH (PTY) LTD

21 RAEBOR ROAD, BENROSE, JOHANNESBURG, 2094

TEL: +27 11 618 2720 | **FAX:** +27 11 614 9603

EMAIL: SALES@MAGNITECH.CO.ZA

WWW.MAGNITECH.CO.ZA