

# iLANGALED



**MAGNITECH**  
LIGHTING INDUSTRIES

## Die-Cast Aluminium Streetlight



**20W**

2,801  
lumens

**30W**

4,252  
lumens

**40W**

5,755  
lumens

**50W**

6,280  
lumens

**60W**

6,848  
lumens



## Hello **Versatility!**

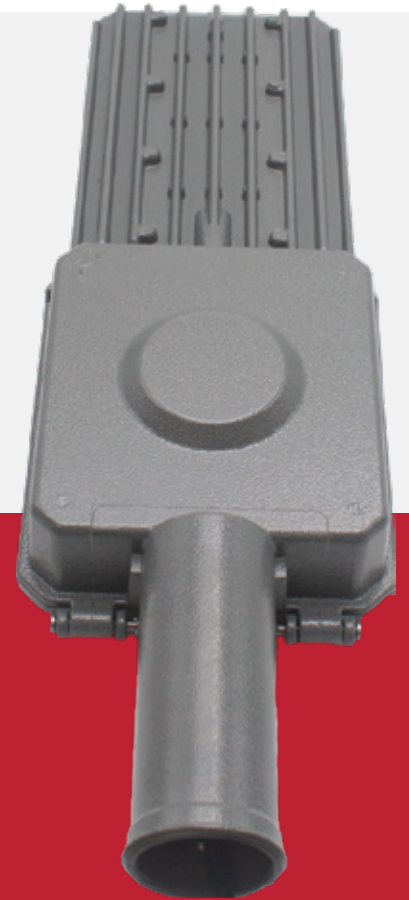
A cost-effective LED streetlight available in 20W - 60W, ideal for residential roads, major routes (B3 - B1, A4 - A3), parking areas and security applications.

Made from AC 44300 aluminium for excellent corrosion resistance in coastal and industrial environments. Equipped with high-power LEDs and IP66/IK10-rated lenses in various optical distributions for reliable, high-efficiency performance.

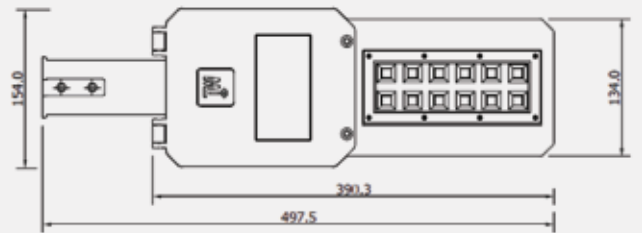


## Fit-For-Purpose:

- Street Lighting
- Conveyors
- Security Lighting
- General Amenity
- Class B Roadways
- Parking Areas



Description	X	Y	Z
Bracket (Pole Mounting)	150mm	42mm	76mm
	250mm	42mm	76mm
	500mm	42mm	76mm

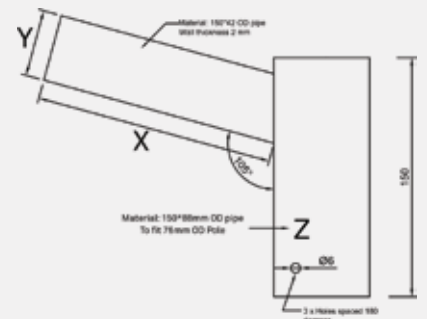


**INCREDIBLE**  
LED PERFORMANCE

**EASE OF**  
MAINTENANCE

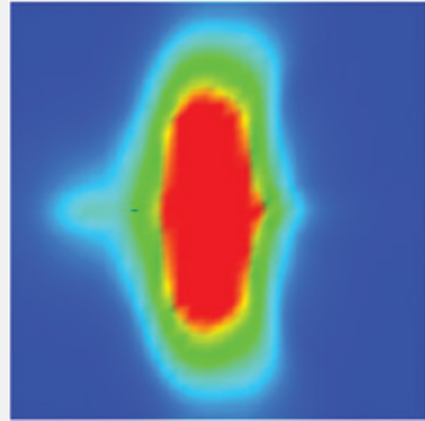
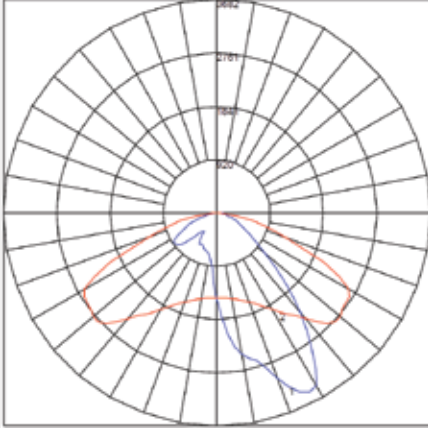
**MARINE GRADE**  
ALUMINIUM FRAME

**SPIGOT**  
MOUNTING



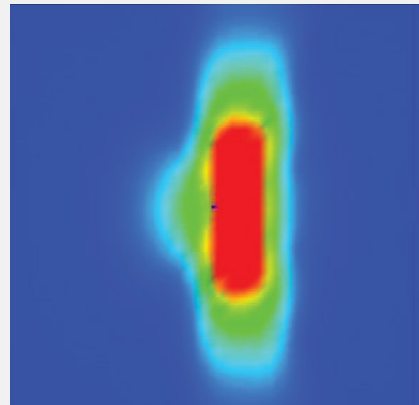
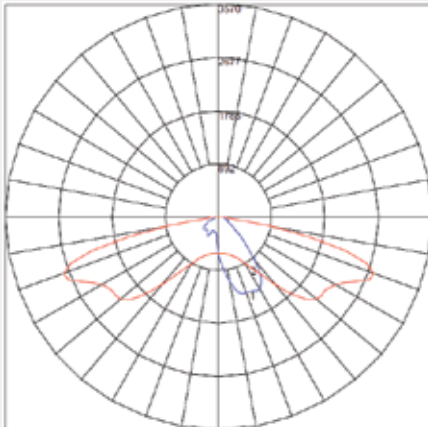


IES ROAD REPORT  
PHOTOMETRIC FILENAME : ILANGALED 40W T2 OPTICS.IES  
POLAR GRAPH



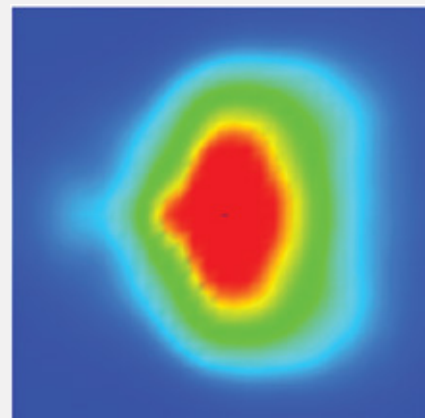
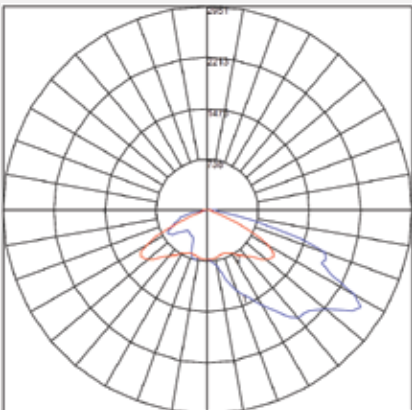
Maximum Candela = 3681.873 Located At Horizontal Angle = 277.5, Vertical Angle = 50  
# 1 - Vertical Plane Through Horizontal Angles (0 - 180)  
# 2 - Vertical Plane Through Horizontal Angles (90 - 270)

IES ROAD REPORT  
PHOTOMETRIC FILENAME : ILANGALED 40W T2-L OPTICS.IES  
POLAR GRAPH



Maximum Candela = 3569.707 Located At Horizontal Angle = 292.5, Vertical Angle = 67.5  
# 1 - Vertical Plane Through Horizontal Angles (0 - 180)  
# 2 - Vertical Plane Through Horizontal Angles (90 - 270)

IES ROAD REPORT  
PHOTOMETRIC FILENAME : ILANGALED 40W T4 OPTICS.IES  
POLAR GRAPH



Maximum Candela = 2950.638 Located At Horizontal Angle = 307.5, Vertical Angle = 60  
# 1 - Vertical Plane Through Horizontal Angles (0 - 180)  
# 2 - Vertical Plane Through Horizontal Angles (90 - 270)

\*Other photometric distributions available on request



FEATURE	SILS0020	SILS0030	SILS0040	SILS0050	SILS0060
NOMINAL POWER	20 Watts	30 Watts	40 Watts	50 Watts	60 Watts
LUMINOUS FLUX (LM)	UP TO 2,801	UP TO 4,252	UP TO 5,755	UP TO 6,280	UP TO 6,848
LUMINOUS EFFECIENCY (LM/W)	UP TO 142	UP TO 138	UP TO 133	UP TO 123	UP TO 112
COLOUR TEMPERATURE	4000K (STANDARD)   2200K / 3000K / 5000K / 6500K (OPTIONAL)				
LED LIFETIME (HOURS) @ TA 25 °C	L90B10 > 100 000 HRS				
CRI	>70				
DIFFUSER	Polycarbonate - IK10				
NOMINAL INPUT VOLTAGE	220V-230V (STANDARD)   90V-305V (OPTIONAL)				
OPERATING TEMPERATURE	-20°C to 50°C				
SURGE PROTECTION	10kV (Standard) 20kV (Optional)				
IP RATING	IP66				
WEIGHT (BOX)	1.3KG				

\* Values shown are AFTER both Thermal and Optical losses. Output will vary depending on optics utilised. Performance values are subject to ±5% variance.

## Product Code Logic

SILS	XXXX	-	X	X	X
FAMILY NAME	WATTAGE		CCT	OPTICS	MOUNTING
	0020 = 20W		2 = 2200K	0 = No Optics	1 = Spigot fitted Side entry insert (42mm Diameter)
	0030 = 30W		3 = 3000K	1 = T1	
	0040 = 40W		4 = 4000K	2 = T2	
	0050 = 50W		5 = 5000K	3 = T2-L	
	0060 = 60W		6 = 6500K	4 = T3	
				5 = T4	

Due to continuing R&D, the above data may change without prior notice. Please consult us for the latest available options. Warranties subject to our standard terms and conditions of sale. Visit our website for our full product range - [www.magnitech.co.za](http://www.magnitech.co.za).

## Related Products



iLangaLED Maxi



MAGVIA



MAGVIA Mini

**MAGNITECH** - BENCHMARKING  
THE STANDARD OF **QUALITY**



**MAGNITECH**  
LIGHTING INDUSTRIES

**MAGNITECH (PTY) LTD**

21 RAEBOR ROAD, BENROSE, JOHANNESBURG, 2094

**TEL:** +27 11 618 2720 | **FAX:** +27 11 614 9603

**EMAIL:** SALES@MAGNITECH.CO.ZA

**[WWW.MAGNITECH.CO.ZA](http://WWW.MAGNITECH.CO.ZA)**