

# MAGVIA



**MAGNITECH**  
LIGHTING INDUSTRIES

## Die-Cast Aluminium Streetlight



**40W**

7,690  
lumens

**60W**

11,090  
lumens

**80W**

13,850  
lumens

**100W**

16,610  
lumens

**120W**

17,878  
lumens



**MAGNITECH**  
LIGHTING INDUSTRIES

**Die-Cast Aluminium**  
**Streetlight**

**SABS**  
ISO 9001

## Hello **Reliability!**

The MAGVIA combines high reliability with excellent photometric performance, making it a strong choice for residential and urban streetlighting applications. Its robust, slimline design reduces wind resistance and simplifies installation, while the smooth surface profile minimises dirt and debris build-up — ensuring long-term efficiency with minimal maintenance.



**SA**  
Made



**100K**  
Hours



**IP66**  
Rating



**IK10**  
Rating



**10kV**

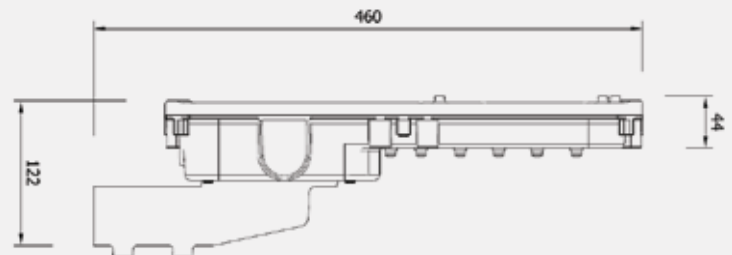


## Fit-For-Purpose:

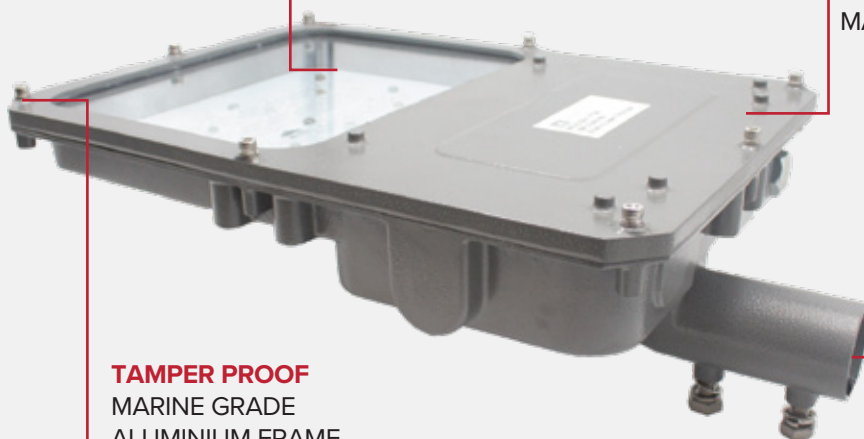
- Street lighting – Class A & B Roadways
- Outdoor Lighting
- Security Lighting
- Town & City Centres
- Parking Areas
- General Amenity



Description	Length	Width
MAGVIA (Pole Mounting)	460mm	285mm

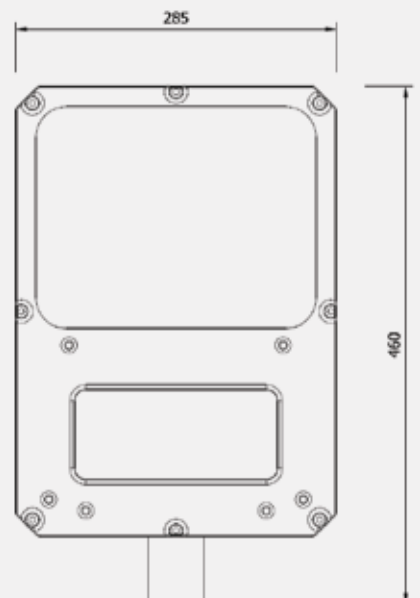


**INCREDIBLE**  
LED PERFORMANCE



**TAMPER PROOF**  
MARINE GRADE  
ALUMINIUM FRAME

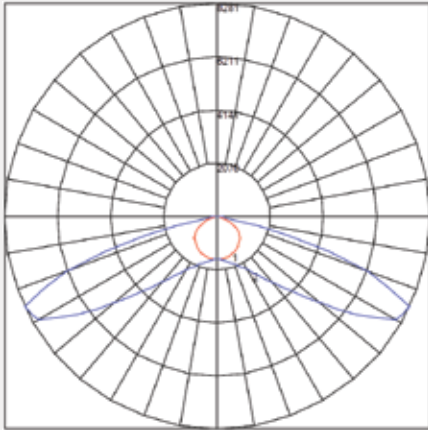
**EASE OF**  
MAINTENANCE



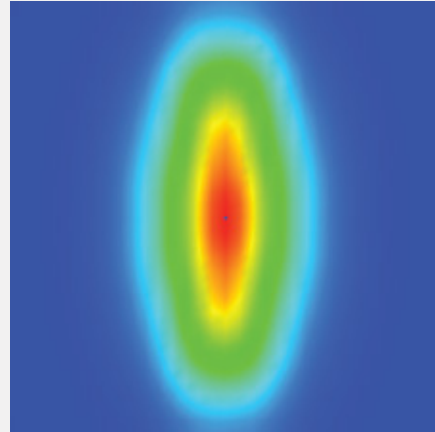
**EASY INSTALLATION**  
SIDE / BOTTOM ENTRY



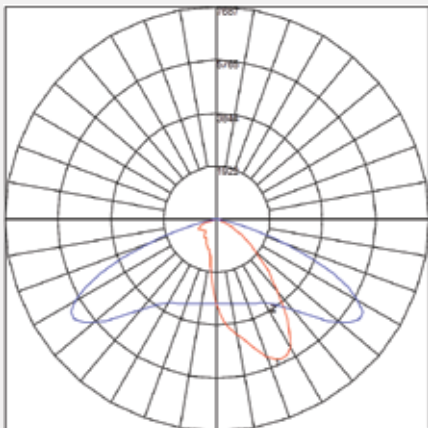
IES ROAD REPORT  
PHOTOMETRIC FILENAME : MAGVIA T1 OPTICS.IES  
POLAR GRAPH



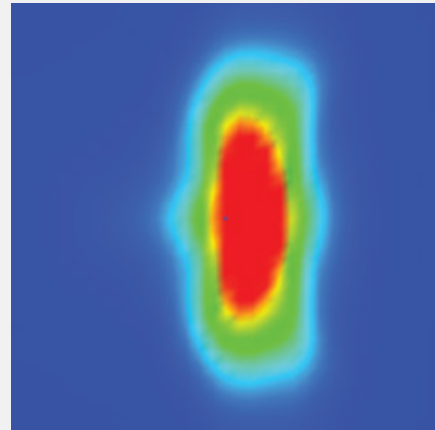
Maximum Candela = 8281214 Located At Horizontal Angle = 270, Vertical Angle = 65  
#1 - Vertical Plane Through Horizontal Angles (0-180)  
#2 - Vertical Plane Through Horizontal Angles (90-270)



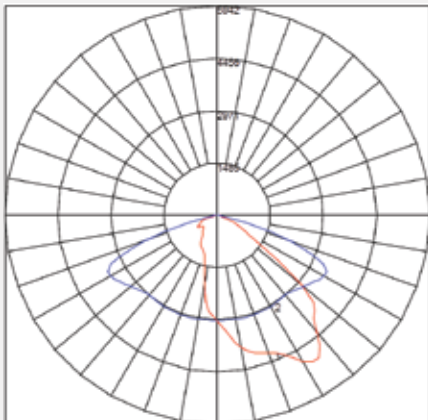
IES ROAD REPORT  
PHOTOMETRIC FILENAME : MAGVIA T2 OPTICS.IES  
POLAR GRAPH



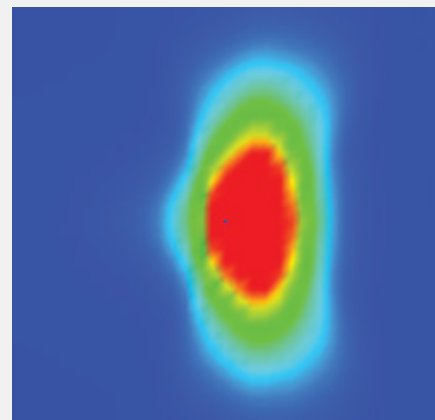
Maximum Candela = 7687185 Located At Horizontal Angle = 277.5, Vertical Angle = 55  
#1 - Vertical Plane Through Horizontal Angles (0-180)  
#2 - Vertical Plane Through Horizontal Angles (90-270)



IES ROAD REPORT  
PHOTOMETRIC FILENAME : MAGVIA ME OPTICS.IES  
POLAR GRAPH



Maximum Candela = 5941734 Located At Horizontal Angle = 292.5, Vertical Angle = 55  
#1 - Vertical Plane Through Horizontal Angles (0-180)  
#2 - Vertical Plane Through Horizontal Angles (90-270)





FEATURE	MLEDV040	MLEDV060	MLEDV080	MLEDV100	MLEDV120
NOMINAL POWER	40 Watts	60 Watts	80 Watts	100 Watts	120 Watts
NOMINAL FLUX (LM)	7690 Lumens	11090 Lumens	13850 Lumens	16610 Lumens	17878 Lumens
NOMINAL EFFICIENCY (LM/W)	192	185	173	166	149
*LUMINAIRE OUTPUT FLUX (LM)	6229	8983	11219	13454	14481
LUMINAIRE OUTPUT RATIO	156	150	141	136	132
NUMBER OF LEDS	16	24	24	24	24
COLOR TEMPERATURE	4000K (STANDARD)   2200K / 3000K / 5000K / 6000K (OPTIONAL)				
LED LIFETIME (HOURS) @ TA 25 °C	L90B10 > 100 000 HRS				
CRI	>70				
DIFFUSER	Glass - IK08 (Standard)   Polycarbonate - IK09/10 (Optional)				
NOMINAL INPUT VOLTAGE	220V-240V (STANDARD)   90V-305V (OPTIONAL)				
OPERATING TEMPERATURE	-40°C to 55°C				
SURGE PROTECTION	10kV (Standard) 20kV (Optional)				
IP RATING	IP66				
WEIGHT (BOX)	4.9KG				

\* Values shown are AFTER both Thermal and Optical losses. Output will vary depending on optics utilised. Performance values are subject to ±5% variance.

## Product Code Logic

MLED	-	M	XXX	-	X	X	X	-	X	X
FAMILY NAME			WATTAGE		CT	OPTICS	MOUNTING		EMERGENCY	ZONE RATING
			040 = 40W		2 = 2200K	0 = No Optics	3 = Spigot fitted 42 Diameter		0 = Standard	0 = Standard
			060 = 60W		3 = 3000K	1 = T1			E = Emergency	2 = Zone 2
			080 = 80W		4 = 4000K	2 = ME				3 = Zone 21/22
			100 = 100W		5 = 5000K	3 = FT				
			120 = 120W		6 = 6000K	4 = T2				
						5 = T4				
						6 = ME Wide				

Due to continuing R&D, the above data may change without prior notice. Please consult us for the latest available options. Warranties subject to our standard terms and conditions of sale. Visit our website for our full product range - [www.magnitech.co.za](http://www.magnitech.co.za).

## Related Products



iLangaLED Maxi



iLangaLED



MAGVIA Mini

**MAGNITECH** - BENCHMARKING  
THE STANDARD OF **QUALITY**



**MAGNITECH**  
LIGHTING INDUSTRIES

**MAGNITECH (PTY) LTD**

21 RAEBOR ROAD, BENROSE, JOHANNESBURG, 2094

**TEL:** +27 11 618 2720 | **FAX:** +27 11 614 9603

**EMAIL:** SALES@MAGNITECH.CO.ZA

**[WWW.MAGNITECH.CO.ZA](http://WWW.MAGNITECH.CO.ZA)**