

FLOODMASTER LED

HIGH EFFICIENCY LED FLOODLIGHT



OVERVIEW



The **FLOODMASTER LED** has a light weight design providing easy retrofitting of existing HID installations, along with quick mounting on all new installations. The unique design efficiently dissipates heat from the light source, extending component life and ultimately prolonging the useful life of the fixture.



ADVANTAGES

- Ultra-Light and Sturdy
- High Light Efficiency
- Easy aiming with protractor scale
- Various angle adjustments with 360° module rotation and curved screw holes
- Efficient Thermal Management
- Modular Construction
- G4 Asymmetrical light distribution is standard to allow for low obtrusive light levels & good control of upward light component.
- 30, 60 & 90 symmetrical beams available
- Anti-Glare hood option available



APPLICATIONS

- High masts
- Stadiums
- Airports
- Parking Lots
- Terminals
- Tennis Courts
- Power Stations
- Commercial Parks
- Sporting Facilities
- Area Lighting



L80B10
98 000 Hours



IP66
Rated



Rated up to
IK10



Surge Protection
Standard



MAGNITECH
LIGHTING INDUSTRIES

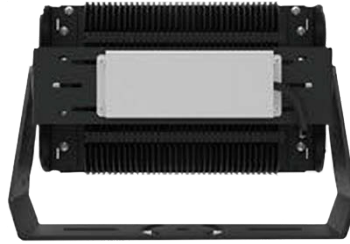
MAGNITECH - BENCHMARKING THE STANDARD OF
QUALITY



MODULAR CONSTRUCTION



Single Module (240W & 300W)



Two Modules (480W & 600W)



Three Modules (720W & 900W)



Accessories

1



Light Shield

2



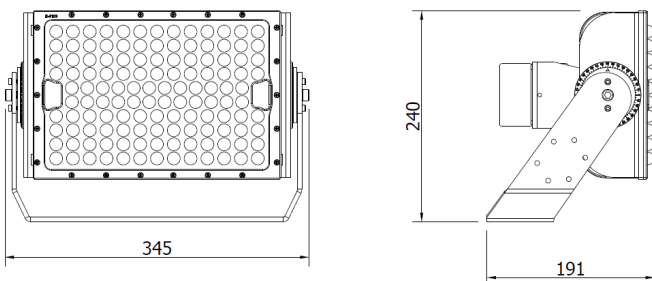
Side Bracket

3

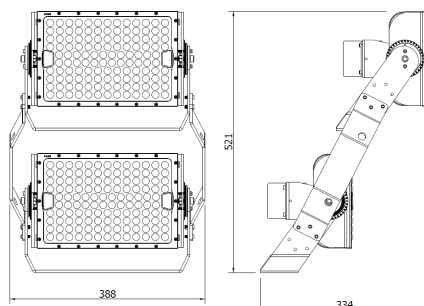
External 10KV/20KV Inline Surge Protection

DIMENSIONS

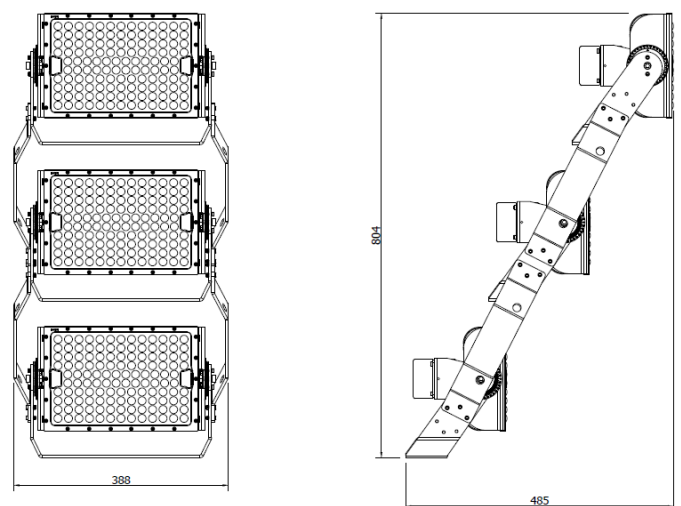
Single Module (240W & 300W)



Two Modules (480W & 600W)

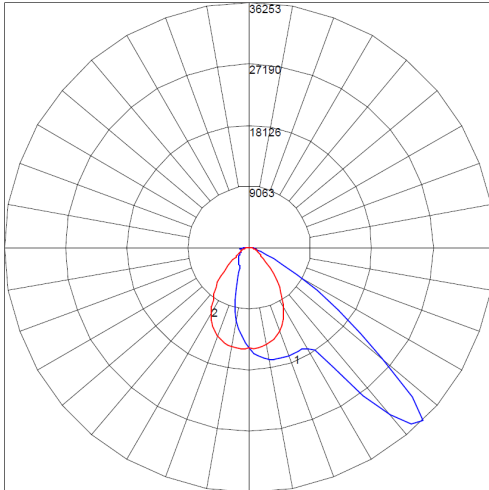


Three Modules (720W & 900W)



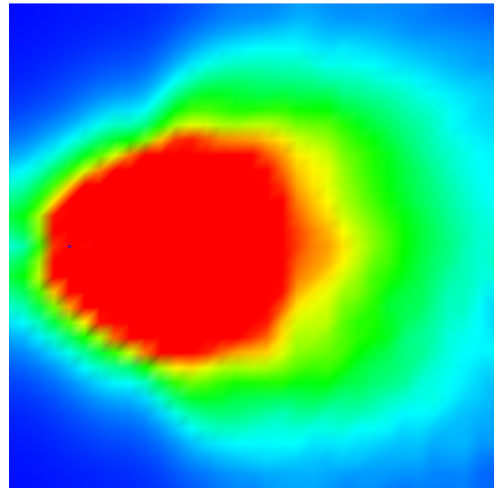
PHOTOMETRIC DATA

IES ROAD REPORT
PHOTOMETRIC FILENAME : FLOODMASTER T600-240W-ASYM.IES
POLAR GRAPH

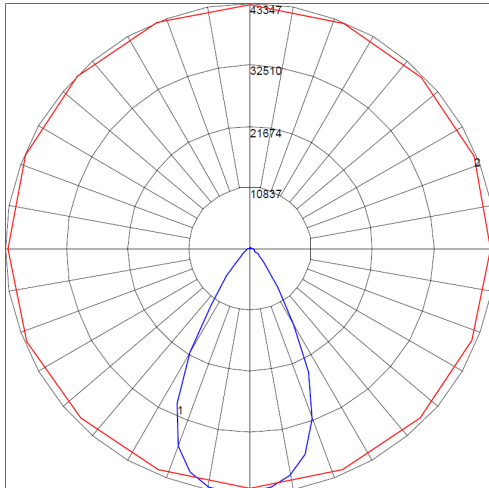


Maximum Candela = 36252.988 Located At Horizontal Angle = 360, Vertical Angle = 45
#1 - Vertical Plane Through Horizontal Angles (360 - 180) (Through Max. Cd.)
#2 - Vertical Plane Through Horizontal Angle (270 - 90)

Pseudo Color iso Illuminance Diagram
Hm = 10m Tilt Angle 35 Deg

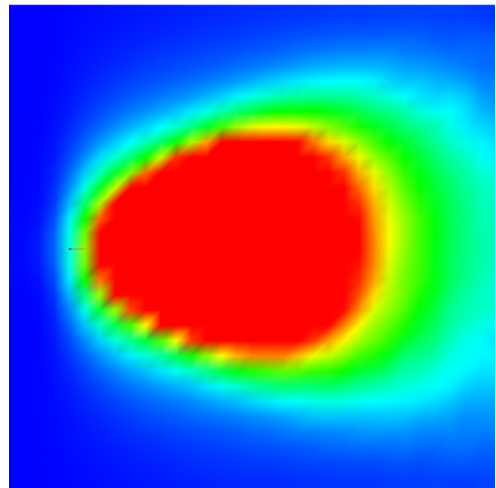


IES ROAD REPORT
PHOTOMETRIC FILENAME : FLOODMASTER T600-240W-60DEG.IES
POLAR GRAPH

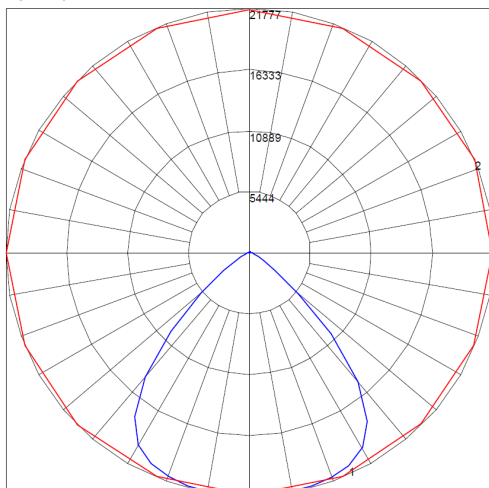


Maximum Candela = 43347.051 Located At Horizontal Angle = 112.5, Vertical Angle = 5
#1 - Vertical Plane Through Horizontal Angles (112.5 - 292.5) (Through Max. Cd.)
#2 - Horizontal Cone Through Vertical Angle (5) (Through max. Cd.)

Pseudo Color iso Illuminance Diagram
Hm = 10m Tilt Angle 65 Deg

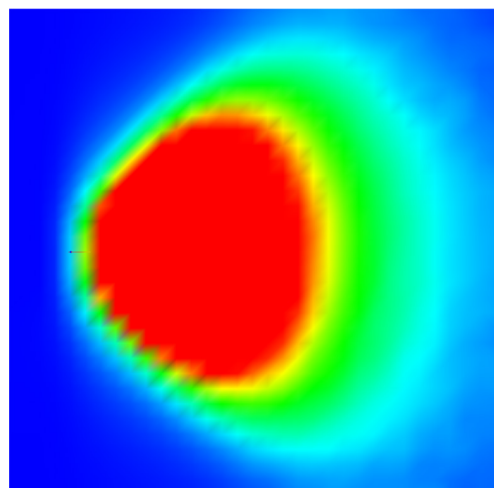


IES ROAD REPORT
PHOTOMETRIC FILENAME : FLOODMASTER T600-240W-90DEG.IES
POLAR GRAPH



Maximum Candela = 21777.301 Located At Horizontal Angle = 22.5, Vertical Angle = 5
#1 - Vertical Plane Through Horizontal Angles (22.5 - 202.5) (Through Max. Cd.)
#2 - Horizontal Cone Through Vertical Angle (5) (Through max. Cd.)

Pseudo Color iso Illuminance Diagram
Hm = 10m Tilt Angle 65 Deg



ORDERING DATA

SINGLE MODULE

PRODUCT CODE	FLED6240	FLED6300
NOMINAL WATTAGE	240W	300W
LUMEN OUTPUT ^*	36376 (G4 Asym Version)	42 477 (G4 Asym Version)
EFFICACY**	152 L/W	142 L/W
WEIGHT	5.5KG	6KG
INRUSH CURRENT	COLD START 60A (twidh=510us measured at 50% lpeak) at 230VAC; Per NEMA 410	COLD START 45A (twidh=1200us measured at 50% lpeak) at 230VAC; Per NEMA 410
INPUT VOLTAGE	AC 100-240V 277V ~ 50/60Hz 220-240V ~ 50Hz (90-305V & 415V ON REQUEST)	
COLOUR TEMPERATURE	5000K STANDARD (2200K - 6500K OPTIONAL)	
COLOUR RENDERING INDEX	Ra => 70	
BEAM ANGLES	G4 ASYMMETRICAL - STANDARD (30° / 60° / 90° SYMMETRICAL OPTIONAL)	
OPERATING TEMPERATURE	-40° - 60°	
IP RATING	IP66	
IK RATING	IK10	
SURGE PROTECTION	6kV STANDARD (10kV or 20kV OPTIONAL)	
LED LIFETIME (HOURS) @ TA 25° C	L ₈₀ B ₁₀ 98 000 HOURS	

^Lumen output figures quoted are luminaire lumens not chip lumens

*Lumen output will vary depending on lens' used. Data based on G4 Asymmetrical lens and 5000K LED

**Efficacy will vary depending on lens' used. Data based on G4 Asymmetrical lens and 5000K LED

The **FLOODMASTER LED** fixtures are modular and can be assembled into various combinations using the 240W and 300W modules. Modules can be assembled 1, 2 or 3 unit configurations.

E.G. 3 X 300W modules with side mounting bracket accessories, gives a 900W **FLOODMASTER LED** with an output of 127 431 lumens

PRODUCT CODE	WATTAGE & COMBINATION
FLED480	480W (2 X 240W)
FLED600	600W (2 X 300W)
FLED720	720W (3 X 240W)
FLED900	900W (3 X 300W)

PRODUCT CODE LOGIC

FLED	A	XXXX	-	X	X
Family Name	Australia	Wattage		CT	Optics
FLED		6240 = 240W		2 = 2700K	0 = No Optics
		6300 = 300W		3 = 3000K	1 = 30 Deg
		4800 = 480W		4 = 4000K	2 = 60 Deg
		6000 = 600W		5 = 5000K	3 = 90 Deg
		7200 = 720W		6 = 6500K	4 = G4 Asymmetrical
		9000 = 900W			

Due to continuing R&D, the above data may change without prior notice. Please consult us for the latest available options. Warranties subject to our standard terms and conditions of sale.



MAGNITECH
LIGHTING INDUSTRIES



SABS
ISO 9001

21 RAEBOR ROAD, BENROSE, JOHANNESBURG

T: +27 11 618 2720

E: SALES@MAGNITECH.CO.ZA

W: MAGNITECH.CO.ZA