

ALUMINIUM
POST TOPS

OVERVIEW



The SK3 LED aluminium post top provides efficient lighting for a variety of amenity lighting applications. The IP54 fitting is suitable for outdoor lighting solutions, while maintaining visual elegance.

**APPLICATIONS**

- Open Car Parks
- Office Park Lighting
- Residential Areas
- Security / Perimeter Fence Lighting
- Public Areas



Made in
South Africa



L90B10
100 000 Hours



IP54
Rated



10kV
Surge Protection
Standard



MAGNITECH
LIGHTING INDUSTRIES

MAGNITECH - BENCHMARKING THE
STANDARD OF **QUALITY**



FEATURES & BENEFITS

LIGHT DISTRIBUTION:

Various light distributions available

COVER:

Heavy duty spun aluminium cover.
Available in Green (Standard), Black & Grey
Other RAL colours available on request

BODY:

LM6 Die Cast Aluminium

LIGHT ENGINE:

High power 50/50 LED's

DIFFUSER:

High Impact Acrylic
(Clear or Prismatic)

FIXING:

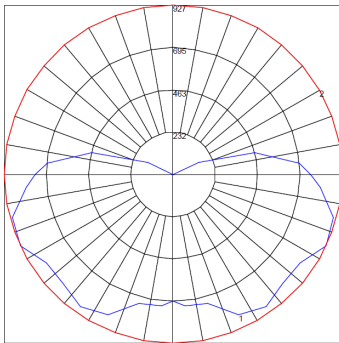
3 X Stainless Steel Grub Screws

Rating: IP54

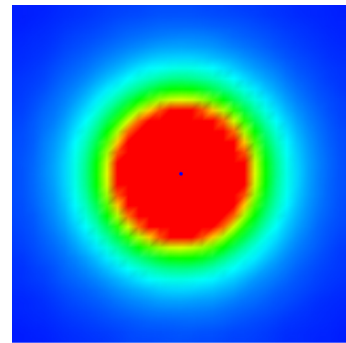
Accessories: Day light switch

PHOTOMETRIC DATA

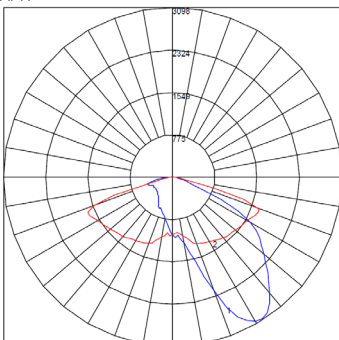
IES ROAD REPORT
PHOTOMETRIC FILENAME : SK3 64W LED - ME.IES
POLAR GRAPH



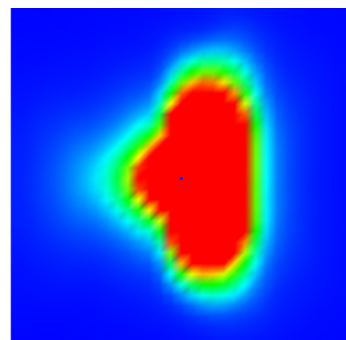
Maximum Candela = 926.88 Located At Horizontal Angle = 0, Vertical Angle = 65
#1 - Vertical Plane Through Horizontal Angles (0-180) (Through Max. Cd.)
#2 - Horizontal Cone Through Vertical Angles (65) (Through Max. Cd.)



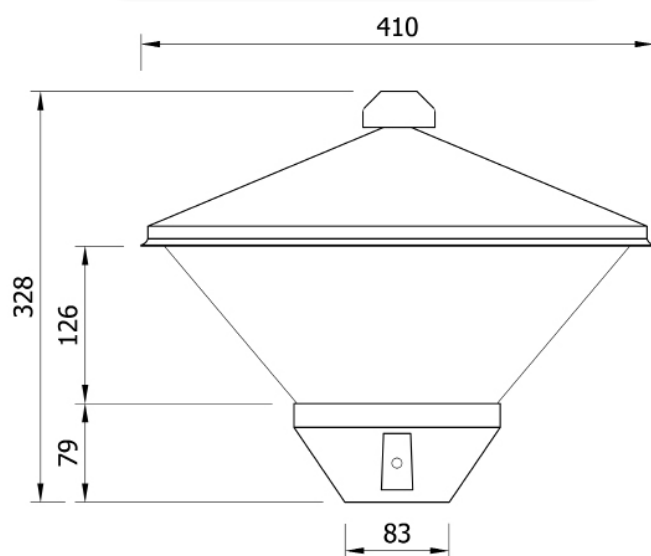
IES ROAD REPORT
PHOTOMETRIC FILENAME : SK3 64W LED - ASY.IES
POLAR GRAPH



Maximum Candela = 3098.323 Located At Horizontal Angle = 60, Vertical Angle = 67.5
#1 - Vertical Plane Through Horizontal Angles (0-180)
#2 - Vertical Plane Through Horizontal Angles (90-270)



DIMENSIONS

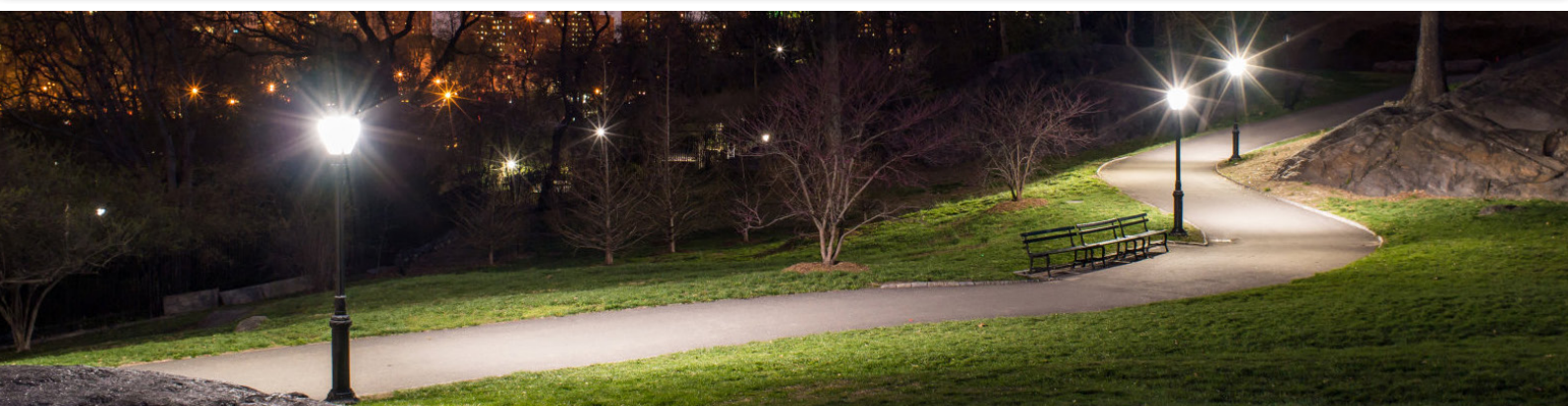


Description	Length	Width
SK3LED (Pole Mounting)	328mm	410mm

ORDERING DATA

SK3					
PRODUCT CODE	LEDS	WATTAGE	CURRENT	LUMENS	WEIGHT
SK3L032410	16	32W	300 (mA)	3490	3.5Kgs
SK3L045410	16	45W	450 (mA)	4850	3.5Kgs
SK3L064410	16	64W	600 (mA)	6620	3.5Kgs

SK3 OPTIONAL EXTRAS	
PRODUCT CODE	DESCRIPTION
SKWB	WALL MOUNT BRACKET
SK30116	ACRYLIC DIFFUSER
SK30128	ALUMINIUM TOPHAT



Due to continuing R&D, the above data may change without prior notice. Please consult us for the latest available options. Warranties subject to our standard terms and conditions of sale.



MAGNITECH
LIGHTING INDUSTRIES



5 RAEBOR ROAD BENROSE JOHANNESBURG 2094
P.O. BOX 27129 JEPPESTOWN 2043

T: +27 (0)11 618 2720 F: +27 (0)11 614 9603
E: SALES@MAGNITECH.CO.ZA
W: MAGNITECH.CO.ZA