

iLANGALED MAXI



MAGNITECH
LIGHTING INDUSTRIES

Die-Cast Aluminium
Streetlight



100W

18,700
lumens

120W

22,179
lumens

150W

25,940
lumens

200W

33,234
lumens

220W

34,980
lumens



MAGNITECH
LIGHTING INDUSTRIES

Die-Cast Aluminium
Streetlight

SABS
ISO 9001

Hello **Reliability!**

A high-performance LED streetlight available from 100W to 220W, designed for major roadways (Class A1–A4).

Constructed from AC 44300 aluminium for superior corrosion resistance in coastal environments. Fitted with high-power LEDs and high-efficiency optical lenses in multiple distributions, the iLANGELED MAXI is engineered for reliable, high-output performance.



Fit-For-Purpose:

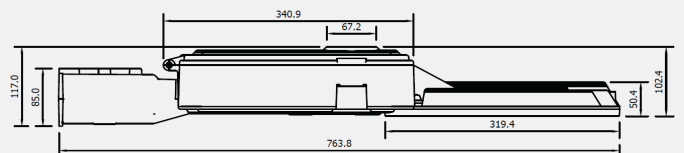
- Street Lighting
- Security Lighting
- General Amenity
- Class A Roadways



Accessories

iLangeLED Maxi 60/42mm Spigot Insert for side entry

iLangeLED Maxi 60/76mm Spigot Insert for bottom entry

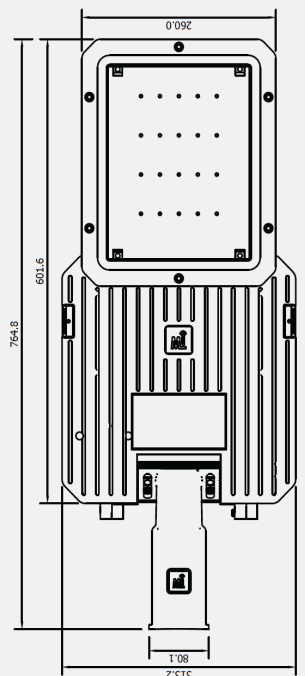


INCREDIBLE
LED PERFORMANCE

MARINE GRADE
ALUMINIUM FRAME

EASE OF
MAINTENANCE

SPIGOT
MOUNTING

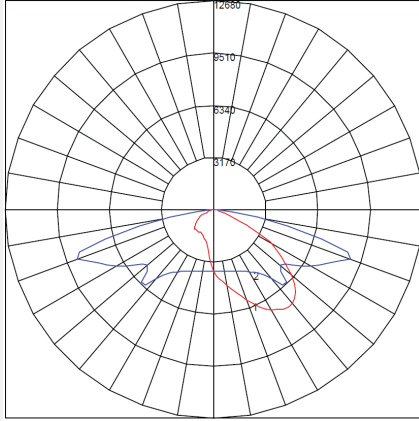




IES ROAD REPORT

PHOTOMETRIC FILENAME : ILANGALED MAXI 200W - 316030.IES

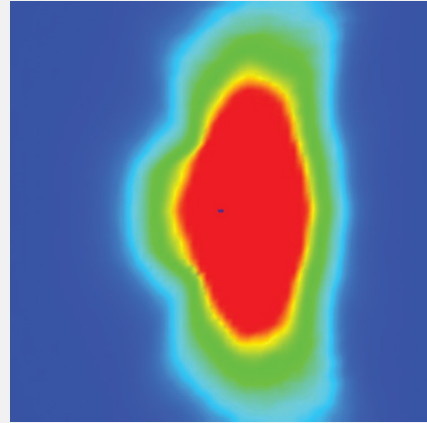
POLAR GRAPH



Maximum Candela = 12680.1 Located At Horizontal Angle = 292.5, Vertical Angle = 75

1 - Vertical Plane Through Horizontal Angles (0 - 180)

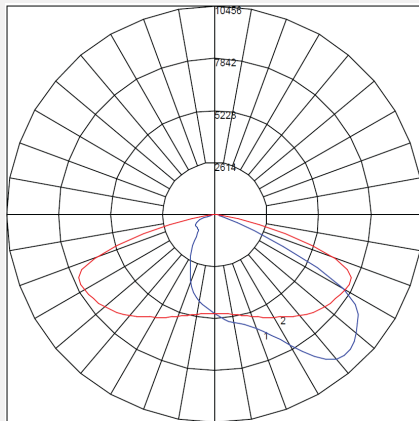
2 - Vertical Plane Through Horizontal Angles (90 - 270)



IES ROAD REPORT

PHOTOMETRIC FILENAME : ILANGALED MAXI 200W - 316045.IES

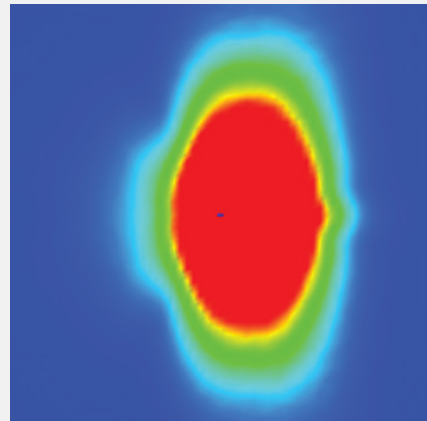
POLAR GRAPH



Maximum Candela = 10455.77 Located At Horizontal Angle = 292.5, Vertical Angle = 62.5

1 - Vertical Plane Through Horizontal Angles (0 - 180)

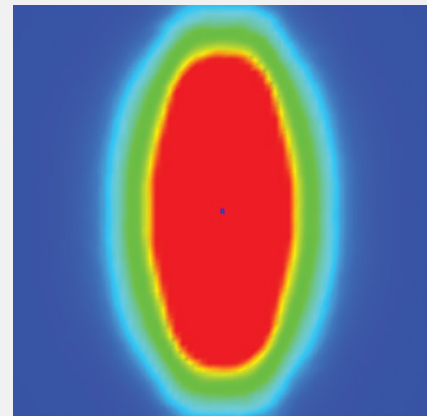
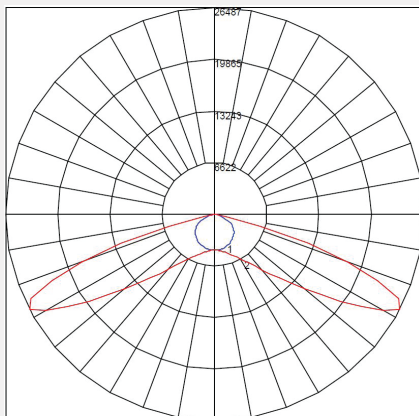
2 - Vertical Plane Through Horizontal Angles (90 - 270)



IES ROAD REPORT

PHOTOMETRIC FILENAME : ILANGALED MAXI 200W - T1.IES

POLAR GRAPH





FEATURE	SILL0100	SILL0120	SILL0150	SILL0200	SILL0220
NOMINAL POWER	100 Watts	120 Watts	150 Watts	200 Watts	220 Watts
NOMINAL FLUX (LM)	18700 Lumens	22179 Lumens	25940 Lumens	33234 Lumens	34980 Lumens
NOMINAL EFFECIENCY (LM/W)	187	192	173	166	159
LUMINAIRE OUTPUT FLUX	15895	18852	22050	28248	29733
LUMINAIRE OUTPUT RATIO	159	152	147	141	135
NUMBER OF LEDS	48				
COLOR TEMPERATURE	4000K (STANDARD) 2200K / 3000K / 6500K (OPTIONAL)				
LED LIFETIME (HOURS) @ TA 25 °C	L90B10 > 100 000 HRS				
CRI	>70				
DIFFUSER	Glass - IK08 (Standard) Polycarbonate - IK09/10 (Optional)				
NOMINAL INPUT VOLTAGE	220V-230V (STANDARD) 90V-305V (OPTIONAL)				
OPERATING TEMPERATURE	-40°C to 55°C				
SURGE PROTECTION	10kV (Standard) 20kV (Optional)				
IP RATING	IP66				
WEIGHT (BOX)	9.1KG				

* Values shown are AFTER both Thermal and Optical losses. Output will vary depending on optics utilised. Performance values are subject to ±5% variance.

Product Code Logic

SILL	XXXX	-	X	X	X
FAMILY NAME	WATTAGE		CT	OPTICS	MOUNTING
	0100 = 100W		1 = 2200K	1 = T1	1 = Spigot fitted 42 Diameter
	0120 = 1200W		2 = 2700K	2 = ME	2 = Spigot fitted 76 Diameter
	0150 = 150W		3 = 3000K	3 = FT	
	0200 = 200W		4 = 4000K	4 = T2	
	0220 = 220W		6 = 6500K	5 = T4	
				6 = ME Wide	

Due to continuing R&D, the above data may change without prior notice. Please consult us for the latest available options. Warranties subject to our standard terms and conditions of sale. Visit our website for our full product range - www.magnitech.co.za.

Related Products



iLangaLED



MAGVIA



MAGVIA Mini

MAGNITECH - BENCHMARKING
THE STANDARD OF **QUALITY**



MAGNITECH
LIGHTING INDUSTRIES

MAGNITECH (PTY) LTD

21 RAEBOR ROAD, BENROSE, JOHANNESBURG, 2094

TEL: +27 11 618 2720 | **FAX:** +27 11 614 9603

EMAIL: SALES@MAGNITECH.CO.ZA

WWW.MAGNITECH.CO.ZA