

# SPECTRALED GEN II



**MAGNITECH**  
LIGHTING INDUSTRIES

Flood Light



<b>100W</b>	<b>200W</b>	<b>300W</b>	<b>400W</b>
16,000 lumens	35,000 lumens	52,500 lumens	70,000 lumens

---

<b>600W</b>	<b>1000W</b>	<b>1200W</b>	<b>1440W</b>
105,000 lumens	170,000 lumens	204,000 lumens	244,800 lumens



**MAGNITECH**  
LIGHTING INDUSTRIES

## Introduction Flood Light

### Hello **Performance!**

The SpectraLED Gen II is an advanced lighting solution designed for professional stadium and high mast applications. Engineered with precision optics, it offers narrow and asymmetric beam angles, making it ideal for sports venues, airport aprons, harbours, wharfs, and other large-scale outdoor environments.

Its lightweight, folding aluminium fin design enhances heat dissipation while reducing structural load—outperforming the majority of competitors in the sports and high mast lighting segment.

Designed for quick installation and reduced labour costs, it features versatile mounting options to accommodate a wide range of configurations.



### Fit-For-Purpose:

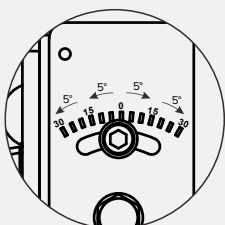
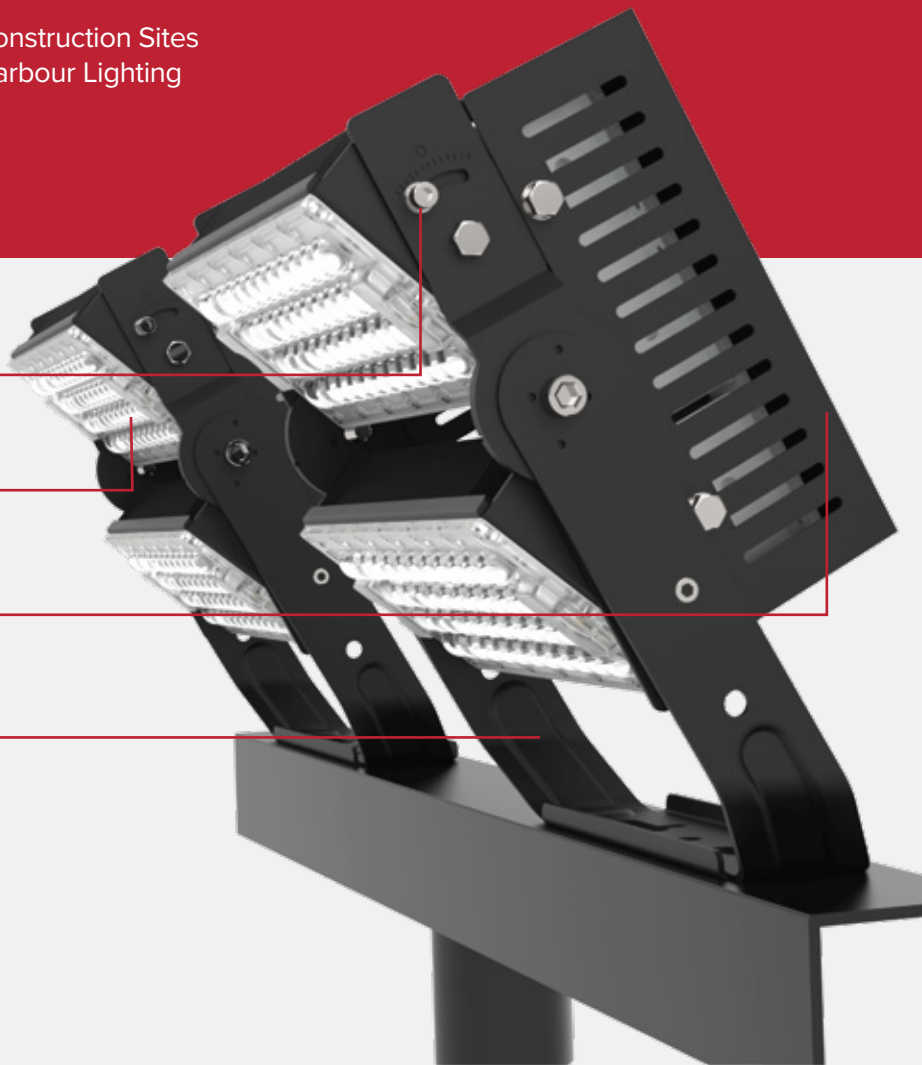
- Sport Fields
- Outdoor Lighting
- Security Lighting
- High Mast Lighting
- Airport Lighting
- Construction Sites
- Harbour Lighting

**ROTATABLE**  
MODULE

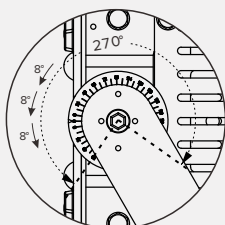
**PROFESSIONAL**  
OPTICS

**FOLDING ALUMINIUM FIN**  
DESIGN

**EASY INSTALLATION**  
BRACKET



Module Rotatable  $\pm 30^\circ$



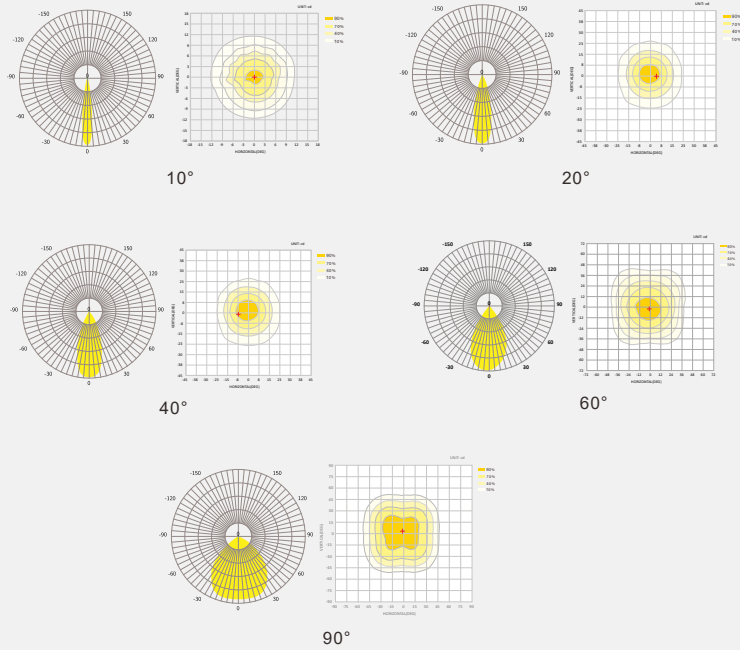
Rotatable  $270^\circ$



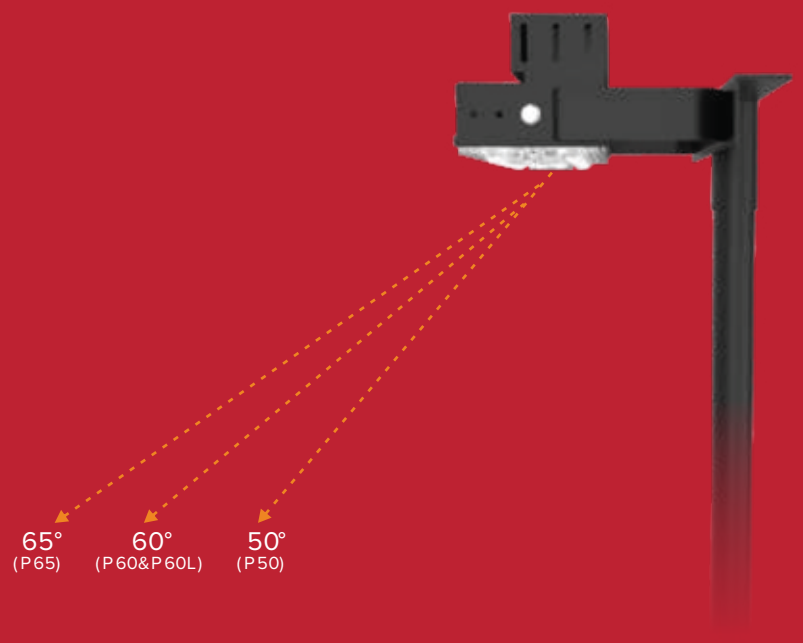
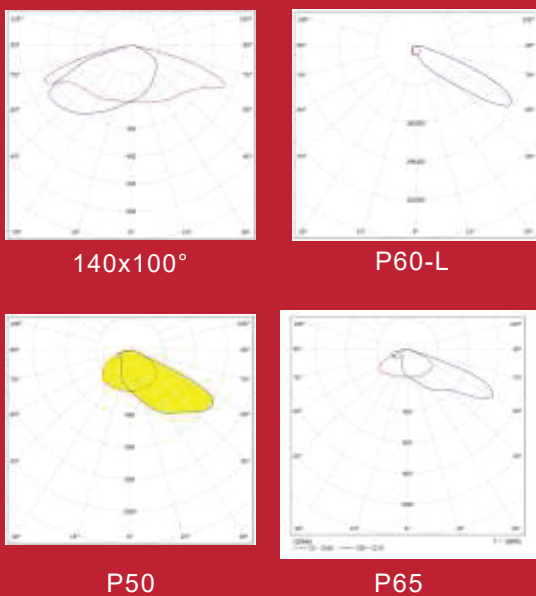
**MAGNITECH**  
LIGHTING INDUSTRIES

**Photometric**  
**Data**

## Symmetrical



## Asymmetrical



**MAGNITECH** - BENCHMARKING THE STANDARD OF **QUALITY**



FEATURE	FLED2100	FLED2200	FLED2300	FLED2400	FLED2600	FLED51000	FLED51200	FLED51440
NOMINAL POWER	100 Watts	200 Watts	300 Watts	400 Watts	600 Watts	1000 Watts	1200 Watts	1440 Watts
NOMINAL FLUX (LM)	16,000 LM	35,000 LM	52,500 LM	70,000 LM	105,000 LM	170,000 LM	204,000 LM	244,800 LM
NOMINAL EFFECIENCY (LM/W)	160	175	175	175	175	170	170	170
EFF. (LM/W) ASYMMETRICAL - P50	155	167	167	167	167	167	167	162
EFF. (LM/W) ASYMMETRICAL - P60-L	-	142	142	142	142	142	140	140
COLOR TEMPERATURE	5000K (STANDARD)   3000K / 4000K / 5700K (OPTIONAL)							
LED LIFETIME (HOURS) @ TA 25 °C	L80B10 > 100 000 HRS							
CRI	>70							
DIFFUSER	POLYCARBONATE - IK10							
NOMINAL INPUT VOLTAGE	100V - 277V							
OPERATING TEMPERATURE	-45°C to 55°C							
SURGE PROTECTION	10kV (Standard) 20kV (Optional)							
IP RATING	IP66							
WEIGHT (KG)	2.2 KG	5.5 KG	7.5 KG	10.0 KG	12.5 KG	16.0 KG	20.0 KG	22.0 KG
DIMENSIONS L x W x H (MM)	297 x 132 x 263	334 x 143 x 332	334 x 143 x 472	334 x 143 x 612	589 x 188 x 484	589 x 188 x 632	589 x 188 x 780	589 x 188 x 928
OPTIONAL EXTRAS	10°, 20°, 40°, 60°, 90°, ASYMMETRIC (P50, P60-L)							

\* Values shown are AFTER both Thermal and Optical losses. Output will vary depending on optics utilised. Performance values are subject to ±5% variance.

## Product Code Logic

FLED	-	XXXX	-	X	X	X
FAMILY NAME		WATTAGE		CT	OPTICS	MOUNTING
		2100 = 100W		3 = 3000K	1 = 10°	1 = Standard HDG Trunnion Arm
		2200 = 200W		4 = 4000K	4 = 40°	B = Stainless Steel Trunnion Arm
		2300 = 300W		5 = 5000K	6 = 60°	
		2400 = 400W		6 = 5700K	9 = 90°	
		2600 = 600W				
		51000 = 1000W				
		51200 = 1200W				
		51440 = 1440W				

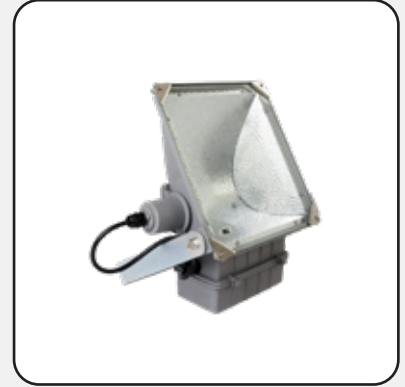
## Related Products



Solar High Mast



FloodMaster LED



HP10 HPDC

**MAGNITECH** - BENCHMARKING  
THE STANDARD OF **QUALITY**



**MAGNITECH**  
LIGHTING INDUSTRIES

**MAGNITECH (PTY) LTD**

21 RAEBOR ROAD, BENROSE, JOHANNESBURG, 2094

**TEL:** +27 11 618 2720 | **FAX:** +27 11 614 9603

**EMAIL:** SALES@MAGNITECH.CO.ZA

**WWW.MAGNITECH.CO.ZA**