

iLANGALED



MAGNITECH
LIGHTING INDUSTRIES

Die-Cast Aluminium Streetlight



20W

3,284
lumens

30W

4,702
lumens

40W

6,037
lumens

50W

7,106
lumens

60W

7,952
lumens



MAGNITECH
LIGHTING INDUSTRIES

Die-Cast Aluminium
Streetlight

SABS
ISO 9001

Hello **Versatility!**

A cost-effective LED streetlight available in 20W - 60W, ideal for residential roads, major routes (B3 - B1, A4 - A3), parking areas and security applications.

Made from AC 44300 aluminium for excellent corrosion resistance in coastal and industrial environments. Equipped with high-power LEDs and IP66/IK10-rated lenses in various optical distributions for reliable, high-efficiency performance.



SA
Made



100K
Hours



IP66
Rating



IK10
Rating



10kV



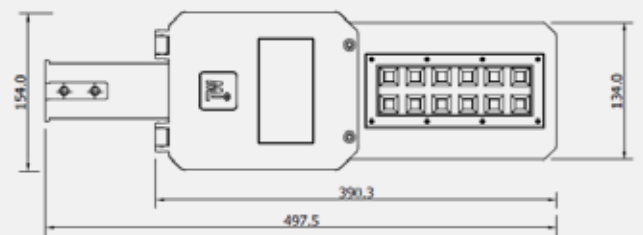
SABS
APPROVED

Fit-For-Purpose:

- Street Lighting
- Conveyors
- Security Lighting
- General Amenity
- Class B Roadways
- Parking Areas



| Description | X | Y | Z |
|-------------------------|-------|------|------|
| Bracket (Pole Mounting) | 150mm | 42mm | 76mm |
| | 250mm | 42mm | 76mm |
| | 500mm | 42mm | 76mm |



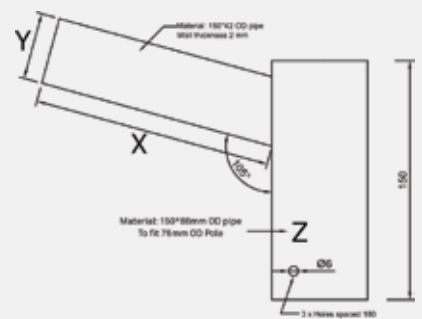
INCREDIBLE
LED PERFORMANCE

EASE OF
MAINTENANCE



MARINE GRADE
ALUMINIUM FRAME

SPIGOT
MOUNTING



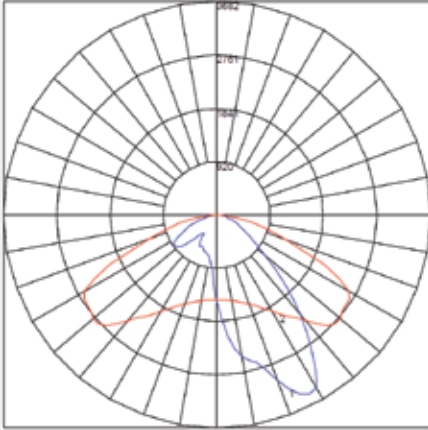


MAGNITECH
LIGHTING INDUSTRIES

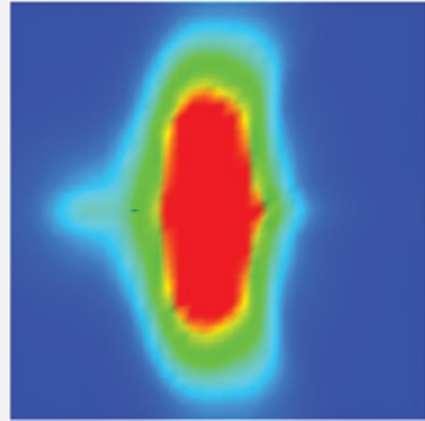
Photometric
Data

SABS
ISO 9001

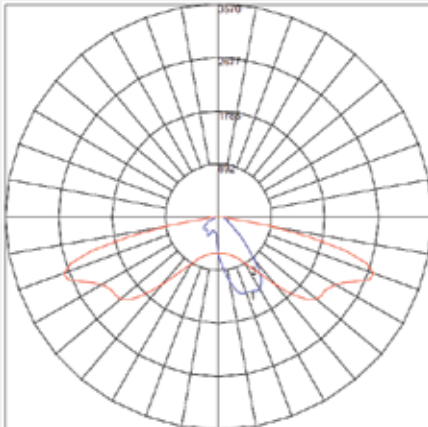
IES ROAD REPORT
PHOTOMETRIC FILENAME : ILANGALED 40W T2 OPTICS.IES
POLAR GRAPH



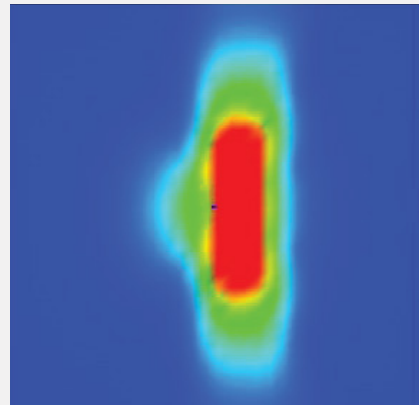
Maximum Candela = 3681.873 Located At Horizontal Angle = 277.5, Vertical Angle = 50
1 - Vertical Plane Through Horizontal Angles (0 - 180)
2 - Vertical Plane Through Horizontal Angles (90 - 270)



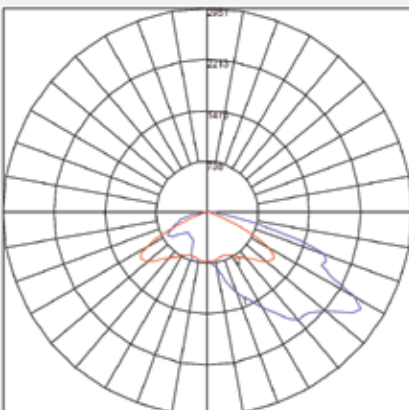
IES ROAD REPORT
PHOTOMETRIC FILENAME : ILANGALED 40W T2-L OPTICS.IES
POLAR GRAPH



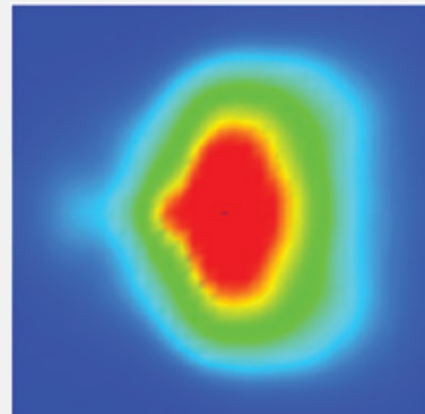
Maximum Candela = 3569.707 Located At Horizontal Angle = 292.5, Vertical Angle = 67.5
1 - Vertical Plane Through Horizontal Angles (0 - 180)
2 - Vertical Plane Through Horizontal Angles (90 - 270)



IES ROAD REPORT
PHOTOMETRIC FILENAME : ILANGALED 40W T4 OPTICS.IES
POLAR GRAPH



Maximum Candela = 2950.638 Located At Horizontal Angle = 307.5, Vertical Angle = 60
1 - Vertical Plane Through Horizontal Angles (0 - 180)
2 - Vertical Plane Through Horizontal Angles (90 - 270)





| FEATURE | SILS0020 | SILS0030 | SILS0040 | SILS0050 | SILS0060 |
|---------------------------------|---|-------------|-------------|-------------|-------------|
| NOMINAL POWER | 20 Watts | 30 Watts | 40 Watts | 50 Watts | 60 Watts |
| LUMINOUS FLUX (LM) | 3284 Lumens | 4702 Lumens | 6037 Lumens | 7106 Lumens | 7952 Lumens |
| RATED POWER | 540 mA | 800 mA | 1020 mA | 1250 mA | 1470 mA |
| COLOR TEMPERATURE | 4000K (STANDARD) 2200K / 3000K / 6500K (OPTIONAL) | | | | |
| LED LIFETIME (HOURS) @ TA 25 °C | L90B10 > 100 000 HRS | | | | |
| CRI | >70 | | | | |
| HUMIDITY | 5% - 95% | | | | |
| NOMINAL INPUT VOLTAGE | 220V-230V (STANDARD) 90V-305V (OPTIONAL) | | | | |
| OPERATING TEMPERATURE | -20°C to 50°C | | | | |
| SURGE PROTECTION | 10kV (Standard) 20kV (Optional) | | | | |
| IP RATING | IP66 | | | | |
| WEIGHT (BOX) | 1.3KG | | | | |

* Values shown are AFTER both Thermal and Optical losses. Output will vary depending on optics utilised. Performance values are subject to ±5% variance.

Product Code Logic

| SILS | XXXX | - | X | X |
|-------------|------------|---|-----------|---------------|
| FAMILY NAME | WATTAGE | | CT | OPTICS |
| SILS | 0020 = 20W | | 2 = 2200K | 0 = No Optics |
| | 0030 = 30W | | 3 = 3000K | 1 = T1 |
| | 0040 = 40W | | 4 = 4000K | 2 = T2 |
| | 0050 = 50W | | 5 = 5000K | 3= T2-L |
| | 0055 = 55W | | 6 = 6500K | 4 = T3 |
| | 0060 = 60W | | | 5 = T4 |

Due to continuing R&D, the above data may change without prior notice. Please consult us for the latest available options. Warranties subject to our standard terms and conditions of sale. Visit our website for our full product range - www.magnitech.co.za.

Related Products



iLangaLED Maxi



MAGVIA



MAGVIA Mini

MAGNITECH - BENCHMARKING
THE STANDARD OF **QUALITY**



MAGNITECH
LIGHTING INDUSTRIES

MAGNITECH (PTY) LTD

21 RAEBOR ROAD, BENROSE, JOHANNESBURG, 2094

TEL: +27 11 618 2720 | **FAX:** +27 11 614 9603

EMAIL: SALES@MAGNITECH.CO.ZA

WWW.MAGNITECH.CO.ZA