

LED HIGHBAY



OVERVIEW



The SPECTRALED highbay range is a highly efficient luminaire range designed for high performance and optimal heat dissipation. With an efficacy of up to 160lm/W, multiple optics to choose from as well as multiple mounting options, the SPECTRALED Highbay is a natural choice for a variety of highbay applications



APPLICATIONS

- Warehouses
- Industrial
- Food processing facilities
- Cold storage facilities



ACCESSORIES

- Microwave Motion sensor
- Zigbee lighting system
- Aluminium reflector
- PC reflector
- Tempered Glass
- Yoke Bracket



L80B20
54 000 Hours



IP65
Rated



Rated up to
IK10



Emergency Version
Available



MAGNITECH
LIGHTING INDUSTRIES

MAGNITECH - BENCHMARKING THE
STANDARD OF **QUALITY**



FEATURES & BENEFITS

STANDARDS:
IEC 60598-1

PROTECTOR:
Polycarbonate Diffuser

SURGE PROTECTION
6kV/6kA - Standard

LIGHT ENGINE:
High power 2835 LED's

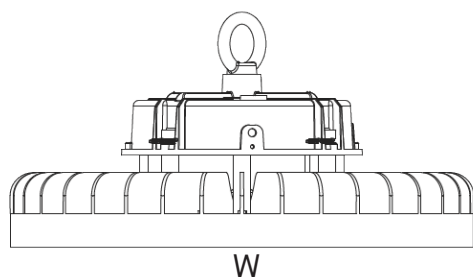
HOUSING:
ACD12 Marine Grade Aluminium

ACCESSORIES:
Aluminium Reflector
PC Reflector
Yoke Bracket



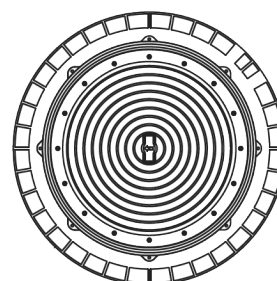
DIMENSIONS

CATALOGUE No	Width (W)	Hight (H)
SpectraLED Highbay 100W	258mm	147mm
SpectraLED Highbay 150W	299mm	147mm
SpectraLED Highbay 200W	347mm	150mm
SpectraLED Highbay 300W	400mm	202mm
SpectraLED Highbay 400W	400mm	202mm

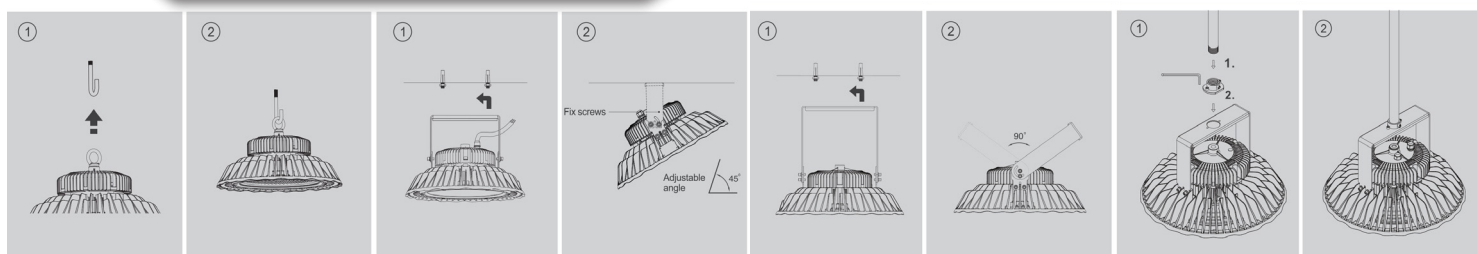


H

W

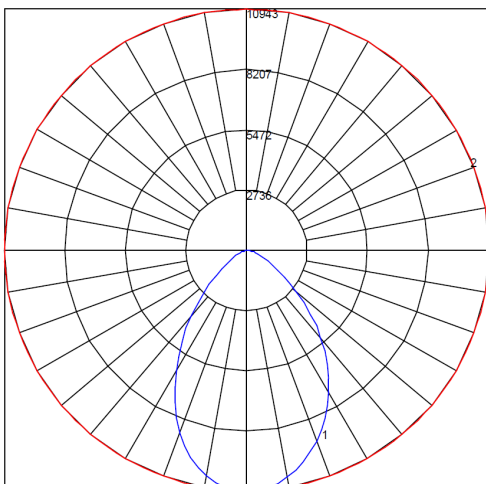


MOUNTING OPTIONS

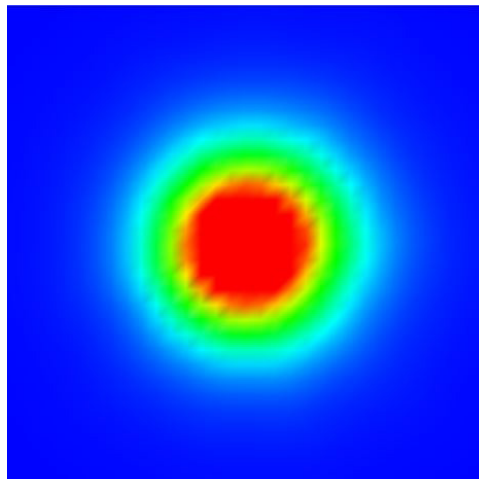


PHOTOMETRIC DATA

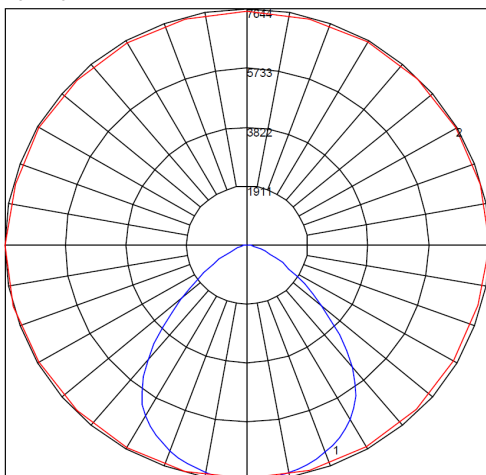
IES ROAD REPORT
PHOTOMETRIC FILENAME : SPECTRALED HIGHBAY-100W-(57K)60.IES
POLAR GRAPH



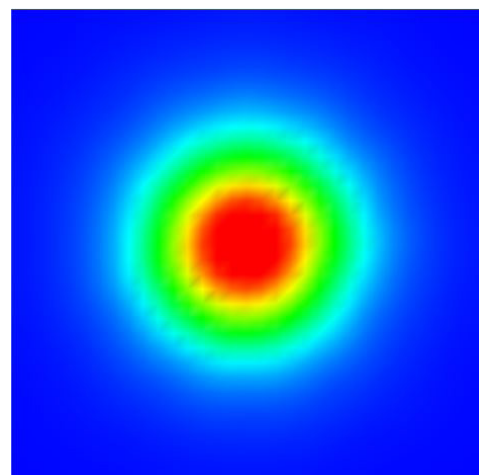
Maximum Candela = 10943.27 Located At Horizontal Angle = 0 Vertical Angle = 0
#1 - Vertical Plane Through Horizontal Angles (0-180) (Through Max. Cd.)
#2 - Horizontal Cone Through Vertical Angles (0) (Through Max. Cd.)



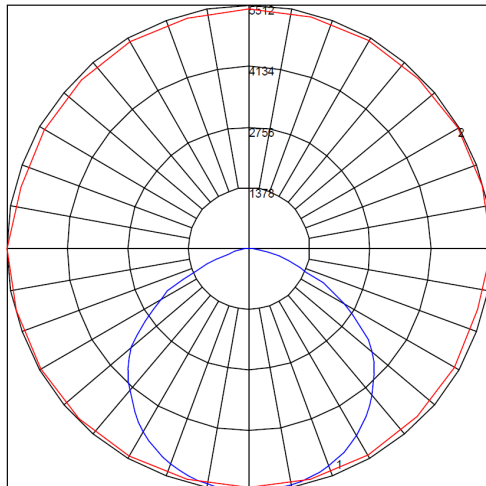
IES ROAD REPORT
PHOTOMETRIC FILENAME : SPECTRALED HIGHBAY-100W-(57K)90.IES
POLAR GRAPH



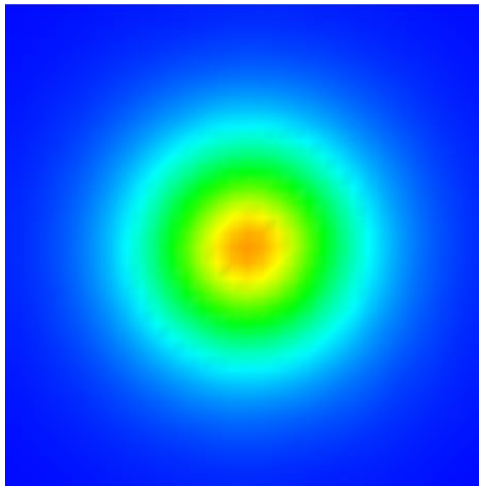
Maximum Candela = 7643.88 Located At Horizontal Angle = 0, Vertical Angle = 2.5
#1 - Vertical Plane Through Horizontal Angles (0-180) (Through max. Cd.)
#2 - Horizontal Cone Through Vertical Angle (2.5) (Through Max. Cd.)



IES ROAD REPORT
PHOTOMETRIC FILENAME : SPECTRALED HIGHBAY-100W-(57K)120.IES
POLAR GRAPH



Maximum Candela = 5512.01 Located At Horizontal Angle = 0, Vertical Angle = 2.5
#1 - Vertical Plane Through Horizontal Angles (0-180) (Through max. Cd.)
#2 - Horizontal Cone Through Vertical Angle (2.5) (Through Max. Cd.)



ORDERING DATA

	SPECTRALED HIGHBAY					
PRODUCT CODE	HLED0100	HLED0120	HLED0150	HLED0200	HLED0300	HLED0400
NOMINAL WATTAGE	100W	120W	150W	200W	300W	400W
*LUMINAIRE OUTPUT FLUX (LM)	15 500lm	18 600lm	23 250lm	31 000lm	45 000lm	60 000lm
LUMINAIRE OUTPUT RATIO	155lm/W	155lm/W	155lm/W	155lm/W	150lm/W	150lm/W
WEIGHT	2.2Kgs	2.2Kgs	2.2Kgs	2.7Kgs	7Kgs	7Kgs
BEAM ANGLE	60°, 90°, 120°	60°, 90°, 120°	60°, 90°, 120°	60°, 90°, 120°	60°, 90°, 120°	90°, 120°
COLOR TEMPERATURE	3000k - 6000k					
LED LIFETIME (HOURS) @ TA 25 °C	L80B20 54 000 Hours					
CRI	> Ra70 (> Ra80 - Optional)					
DIFFUSER	Polycarbonate Diffuser					
NOMINAL INPUT VOLTAGE	100V-277V AC (90V-305V AC optional) 50-60HZ					
OPERATING TEMPERATURE	-30° - +50°C					
SURGE PROTECTION	6kVA (Built In)					
IP RATING	IP65					

* Values shown are AFTER both Thermal and Optical losses
Output will vary depending on optics utilised. Performance values are subject to ±5% variance

PRODUCT CODE LOGIC

HLED	-	XXXX	-	X	X	X	-	X	X
Family Name		Wattage		CT	Optics	Mounting		Emergency	Accessories
		0100 = 100W		3 = 3000K 0 = 120°		E = Eyebolt (Standard)		0 = Standard	0 = Microwave Motion Sensor
		0120 = 120W		4 = 4000K 3 = 30°		S = Stirrup Bracket		E = Emergency	1 = Zigbee lighting system
		0150 = 150W		5 = 5000K 6 = 60°					2 = DALI Controller
		0200 = 200W		6 = 6000K 9 = 90°					3 = Dimmable
		0300 = 300W							4 = 90V - 305V Input
		0400 = 400W							



Due to continuing R&D, the above data may change without prior notice. Please consult us for the latest available options. Warranties subject to our standard terms and conditions of sale.



MAGNITECH
LIGHTING INDUSTRIES



SABS
ISO 9001

21 RAEBOR ROAD BENROSE JOHANNESBURG 2094
P.O. BOX 27129 JEPPESTOWN 2043

T: +27 (0)11 618 2720 F: +27 (0)11 614 9603
E: SALES@MAGNITECH.CO.ZA
W: MAGNITECH.CO.ZA