

# MAGLED GEN II



**MAGNITECH**  
LIGHTING INDUSTRIES

Marine-Grade Aluminium  
Bulkhead



**60W**

9,736  
lumens

**80W**

12,476  
lumens

**100W**

15,039  
lumens

**120W**

17,579  
lumens



**MAGNITECH**  
LIGHTING INDUSTRIES

**Marine-Grade  
Aluminium Bulkhead**

**SABS**  
ISO 9001

## Hello **Performance!**

The MAGLED Gen II delivers exceptional reliability and superb photometric performance, engineered for demanding industrial environments. Its slim, robust design minimises dirt and dust build-up, making it ideal for long-term use in both general industrial settings and hazardous areas (Zone 2 & 21/22).

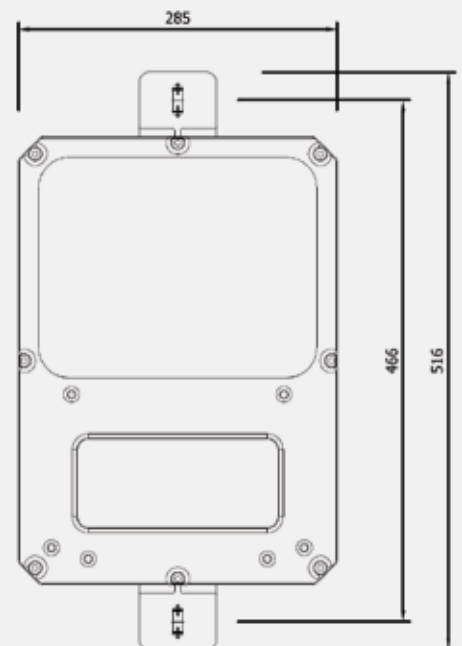
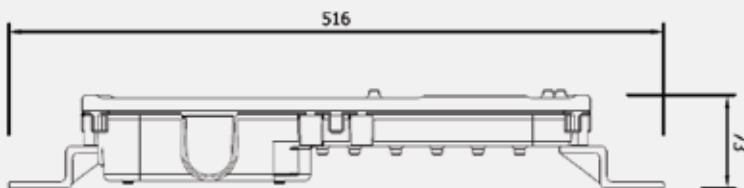


## Fit-For-Purpose:

- Industrial Lighting
- Outdoor Lighting
- Security Lighting
- Conveyors
- Dusty & Dirty Environments
- Tunnel Lighting
- Zone 2, 21 & 22
- Plant Lighting



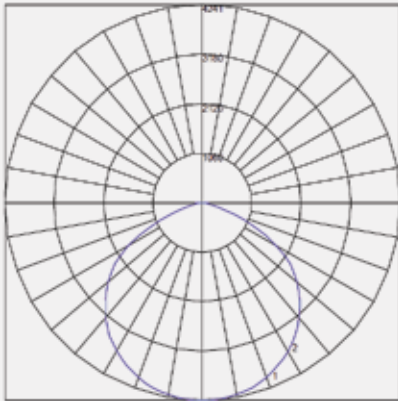
Description	Width	Height
MAGLED GEN II	285mm	516mm



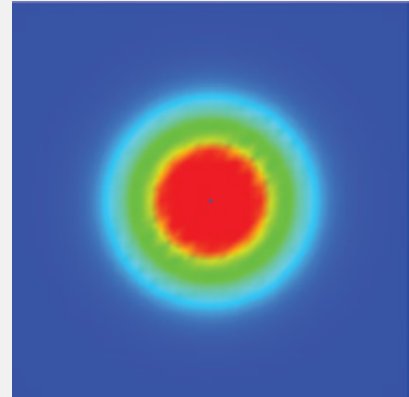
**MAGNITECH** - BENCHMARKING THE STANDARD OF **QUALITY**



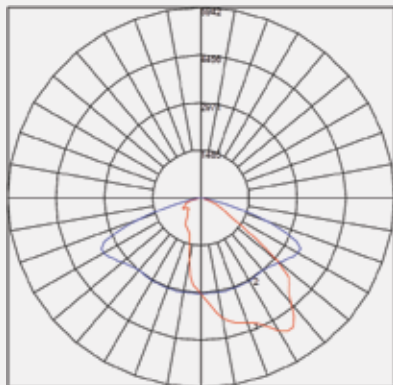
IES ROAD REPORT  
PHOTOMETRIC FILENAME : MAGLED GEN II GENERAL FLOODLIGHT .IES  
POLAR GRAPH



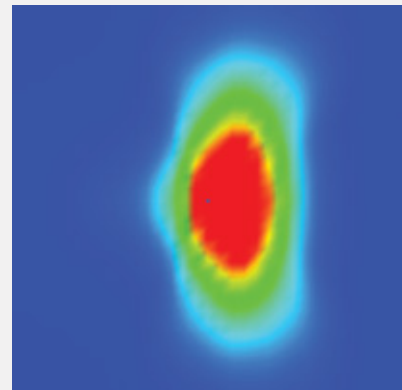
Maximum Candela = 4240.566 Located At Horizontal Angle = 360, Vertical Angle = 0  
#1 - Vertical Plane Through Horizontal Angles (0-180)  
#2 - Vertical Plane Through Horizontal Angles (90-270)



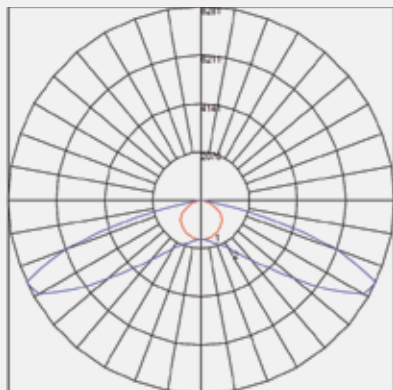
IES ROAD REPORT  
PHOTOMETRIC FILENAME : MAGLED GEN II ME OPTICS.IES  
POLAR GRAPH



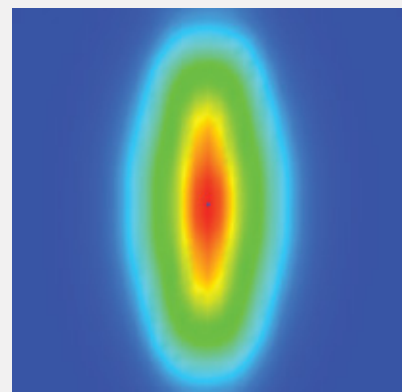
Maximum Candela = 5941.734 Located At Horizontal Angle = 292.5, Vertical Angle = 55  
#1 - Vertical Plane Through Horizontal Angles (0-180)  
#2 - Vertical Plane Through Horizontal Angles (90-270)



IES ROAD REPORT  
PHOTOMETRIC FILENAME : MAGLED GEN II T1 OPTICS.IES  
POLAR GRAPH



Maximum Candela = 8281.214 Located At Horizontal Angle = 270, Vertical Angle = 65  
#1 - Vertical Plane Through Horizontal Angles (0-180)  
#2 - Vertical Plane Through Horizontal Angles (90-270)



\*Other photometric distributions available on request



FEATURE	MLEDM060	MLEDM080	MLEDM100	MLEDM120
NOMINAL POWER	60 Watts	80 Watts	100 Watts	120 Watts
LUMINOUS FLUX (LM)	9736 Lumens	12476 Lumens	15039 Lumens	17579 Lumens
LUMINOUS EFFECIENCY (LM/W)	162	155	150	146
NUMBER OF LEDS	24	24	24	24
COLOUR TEMPERATURE	4000K (STANDARD)   2200K / 3000K / 5000K / 6000K (OPTIONAL)			
LED LIFETIME (HOURS) @ TA 25 °C	L90B10 > 100 000 HRS			
CRI	>70			
DIFFUSER	GLASS - IK08 (STANDARD)   POLYCARBONATE - IK09/10 (OPTIONAL)			
NOMINAL INPUT VOLTAGE	220V-240V (STANDARD)   90V-305V (OPTIONAL)			
OPERATING TEMPERATURE	-40°C to 55°C			
SURGE PROTECTION	10kV (Standard) 20kV (Optional)			
IP RATING	IP66			
WEIGHT (BOX)	5KG			

\* Values shown are AFTER both Thermal and Optical losses. Output will vary depending on optics utilised. Performance values are subject to ±5% variance.

## Product Code Logic

MLED	-	M	XXX	-	X	X	X	-	X	X
FAMILY NAME			WATTAGE		CT	OPTICS	MOUNTING		EMERGENCY	ZONE RATING
			060 = 60W		2 = 2200K	0 = No Optics	1 = Complete (Lugs Fitted)		0 = Standard	0 = Standard
			080 = 80W		3 = 3000K	1 = T1	2 = Stainless Steel Lugs		E = Emergency	2 = Zone 2
			100 = 100W		4 = 4000K	2 = ME	3 = Stirrup Bracket			3 = Zone 21 / 22
			120 = 120W		5 = 5000K	3 = FT	4 = Spigot			
					6 = 6000K	4 = T2				
						5 = T4				
						6 = ME WIDE				

Due to continuing R&D, the above data may change without prior notice. Please consult us for the latest available options. Warranties subject to our standard terms and conditions of sale. Visit our website for our full product range - [www.magnitech.co.za](http://www.magnitech.co.za).

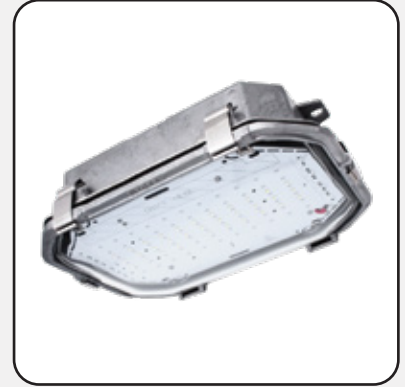
## Related Products



MAGLED MINI



MAG40 LED



MAG44 LED

**MAGNITECH** - BENCHMARKING  
THE STANDARD OF **QUALITY**



**MAGNITECH**  
LIGHTING INDUSTRIES

**MAGNITECH (PTY) LTD**

21 RAEBOR ROAD, BENROSE, JOHANNESBURG, 2094

**TEL:** +27 11 618 2720 | **FAX:** +27 11 614 9603

**EMAIL:** SALES@MAGNITECH.CO.ZA

**[WWW.MAGNITECH.CO.ZA](http://WWW.MAGNITECH.CO.ZA)**