

iLANGALED MAXI



MAGNITECH
LIGHTING INDUSTRIES

Die-Cast Aluminium
Streetlight



100W

14,405
lumens

120W

17,186
lumens

150W

20,531
lumens

180W

23,840
lumens

200W

25,658
lumens

224W

31,809
lumens

Contact us for custom wattages between 100w - 224w



Hello **Reliability!**

A high-performance LED streetlight available from 100W to 224W, designed for major roadways (Class A1–A4).

Constructed from AC 44300 aluminium for superior corrosion resistance in coastal environments. Fitted with high-power LEDs and high-efficiency optical lenses in multiple distributions, the iLANGALED MAXI is engineered for reliable, high-output performance.



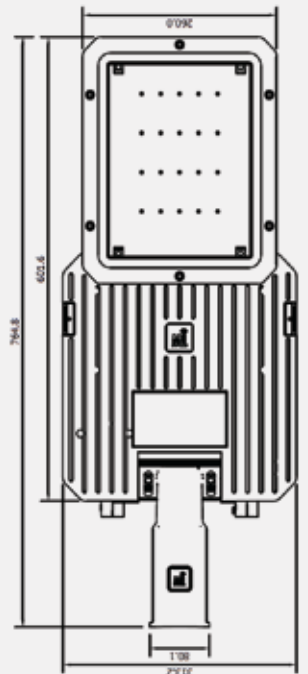
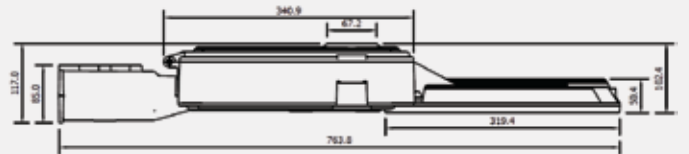
Fit-For-Purpose:

- Street Lighting
- Security Lighting
- General Amenity
- Class A Roadways

Accessories

iLangaLED Maxi 60/42mm Spigot Insert for side entry

iLangaLED Maxi 60/76mm Spigot Insert for bottom entry



INCREDIBLE
LED PERFORMANCE

MARINE GRADE
ALUMINIUM FRAME

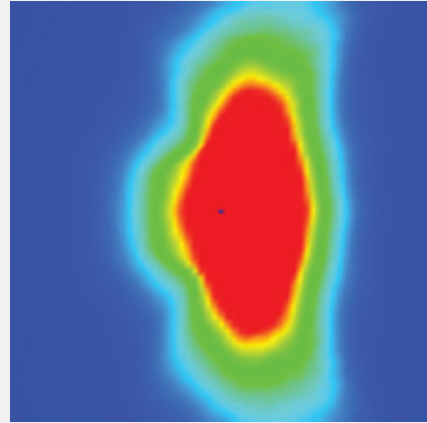
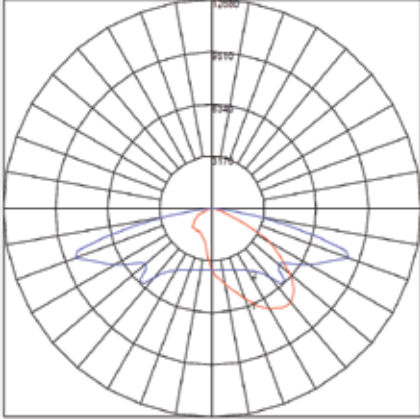
EASE OF
MAINTENANCE

SPIGOT
MOUNTING



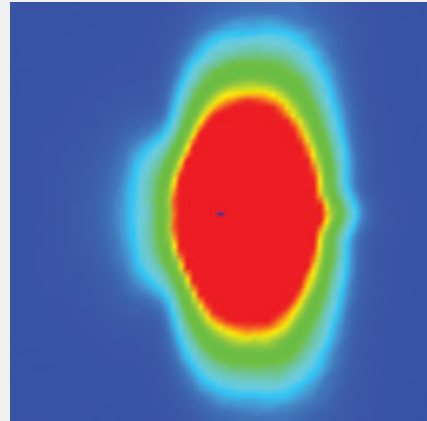
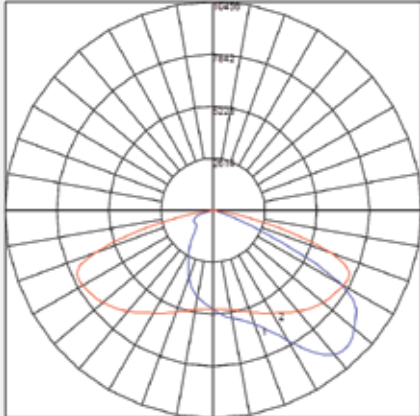


IES ROAD REPORT
PHOTOMETRIC FILENAME : ILANGALED MAXI 200W - 316030.IES
POLAR GRAPH



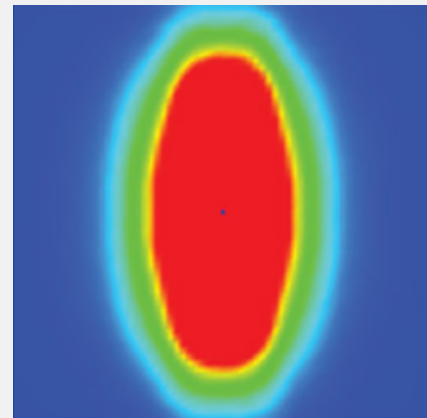
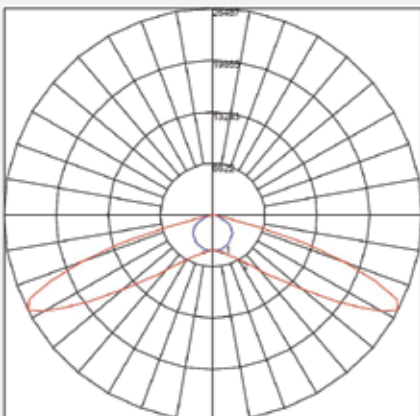
Maximum Candela = 12680.1 Located At Horizontal Angle = 292.5, Vertical Angle = 75
1 - Vertical Plane Through Horizontal Angles (0 - 180)
2 - Vertical Plane Through Horizontal Angles (90 - 270)

IES ROAD REPORT
PHOTOMETRIC FILENAME : ILANGALED MAXI 200W - 316045.IES
POLAR GRAPH



Maximum Candela = 10455.77 Located At Horizontal Angle = 292.5, Vertical Angle = 62.5
1 - Vertical Plane Through Horizontal Angles (0 - 180)
2 - Vertical Plane Through Horizontal Angles (90 - 270)

IES ROAD REPORT
PHOTOMETRIC FILENAME : ILANGALED MAXI 200W - T1.IES
POLAR GRAPH





FEATURE	SILL0100	SILL0120	SILL0150	SILL0180	SILL0200	SILL0220
NOMINAL POWER	100 Watts	120 Watts	150 Watts	180 Watts	200 Watts	224 Watts
LUMINOUS FLUX FLUX (LM)	UP TO 14,405	UP TO 17,186	UP TO 20,531	UP TO 23,840	UP TO 25,658	UP TO 31,809
LUMINOUS EFFECIENCY (LM/W)	UP TO 145	UP TO 141	UP TO 138	UP TO 135	UP TO 132	UP TO 131
NUMBER OF LEDS	48					
COLOUR TEMPERATURE	4000K (STANDARD) 2200K / 3000K / 5000K / 6500K (OPTIONAL)					
LED LIFETIME (HOURS) @ TA 25 °C	L90B10 > 100 000 HRS					
CRI	>70					
DIFFUSER	Glass - IK08 (Standard) Polycarbonate - IK09/10 (Optional)					
NOMINAL INPUT VOLTAGE	220V-230V (STANDARD) 90V-305V (OPTIONAL)					
OPERATING TEMPERATURE	-40°C to 55°C					
SURGE PROTECTION	10kV (Standard) 20kV (Optional)					
IP RATING	IP66					
WEIGHT (BOX)	9.1KG					

* Values shown are AFTER both Thermal and Optical losses. Output will vary depending on optics utilised. Performance values are subject to ±5% variance.

Product Code Logic

SILL	XXXX	-	X	X	X
FAMILY NAME	WATTAGE		CCT	OPTICS	MOUNTING
0100 = 100W			1 = 2200K	1 = T1	0 = Spigot (60mm Diameter) Standard
0120 = 120W			2 = 2700K	2 = ME	1 = Spigot fitted Side entry insert (42mm Diameter)
0150 = 150W			3 = 3000K	3 = FT	2 = Spigot fitted Bottom entry (76mm Diameter)
0180 = 180W			4 = 4000K	4 = T2	
0200 = 200W			5 = 5000K	5 = T4	
0220 = 224W			6 = 6500K	6 = ME Wide	

Due to continuing R&D, the above data may change without prior notice. Please consult us for the latest available options. Warranties subject to our standard terms and conditions of sale. Visit our website for our full product range - www.magnitech.co.za.

Related Products



iLangaLED



MAGVIA



MAGVIA Mini

MAGNITECH - BENCHMARKING
THE STANDARD OF **QUALITY**



MAGNITECH
LIGHTING INDUSTRIES

MAGNITECH (PTY) LTD

21 RAEBOR ROAD, BENROSE, JOHANNESBURG, 2094

TEL: +27 11 618 2720 | **FAX:** +27 11 614 9603

EMAIL: SALES@MAGNITECH.CO.ZA

WWW.MAGNITECH.CO.ZA