

## HIGH PRESSURE DIE CAST ALUMINIUM FLOODLIGHT



### APPLICATION:

- Outdoor lighting
- Security lighting
- Industrial lighting
- Sports field lighting
- Construction site lighting
- Advertising billboard lighting



### FEATURES & BENEFITS:

- IP65 rated
- Marine grade die cast aluminium floodlight
- Heavy duty HDG stirrup mounting bracket
- High purity bright anodised aluminium reflector



### LED OPTIONS

- LED options available
- ✉ email us



### LOCAL CONTENT

- Local design
- Local assembly
- Local manufacture



**MAGNITECH**  
LIGHTING INDUSTRIES

HP15 HPDC



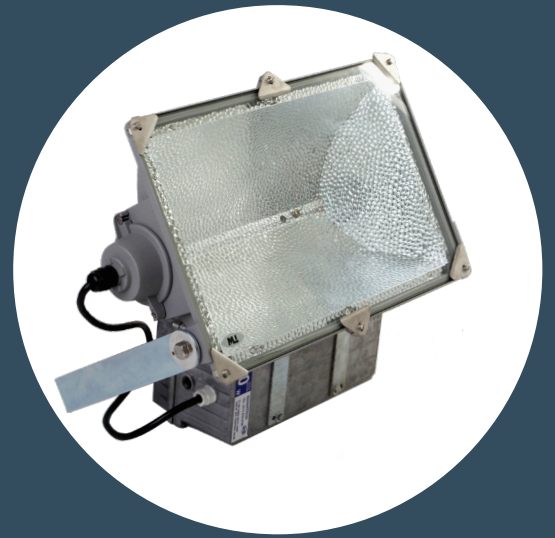
# HP15 HPDC

HIGH PRESSURE DIE CAST ALUMINIUM FLOODLIGHT



## FEATURES

- **Fitting:**  
High pressure die cast marine grade aluminium
- **Reflectors:**  
Bright high purity anodised aluminium reflector system
- **Retaining Screws:**  
External – s/steel exterior fasteners  
Internal – electroplated interior fasteners
- **Lampholder:**  
SABS approved
- **Wiring:**  
High temperature SABS approved
- **Cable Entry:**  
20MM
- **Fixing:**  
Heavy duty HDG stirrup bracket with protractor scale
- **Lens:**  
Toughened glass
- **Control Gear:**  
SABS approved HPF 0.85
- **Rating:**  
IP 65 Rated
- **Gasket:**  
Closed cell silicon gasket for durability and heat resistance



Heavy duty HDG stirrup mounting bracket

High purity anodised aluminium reflector



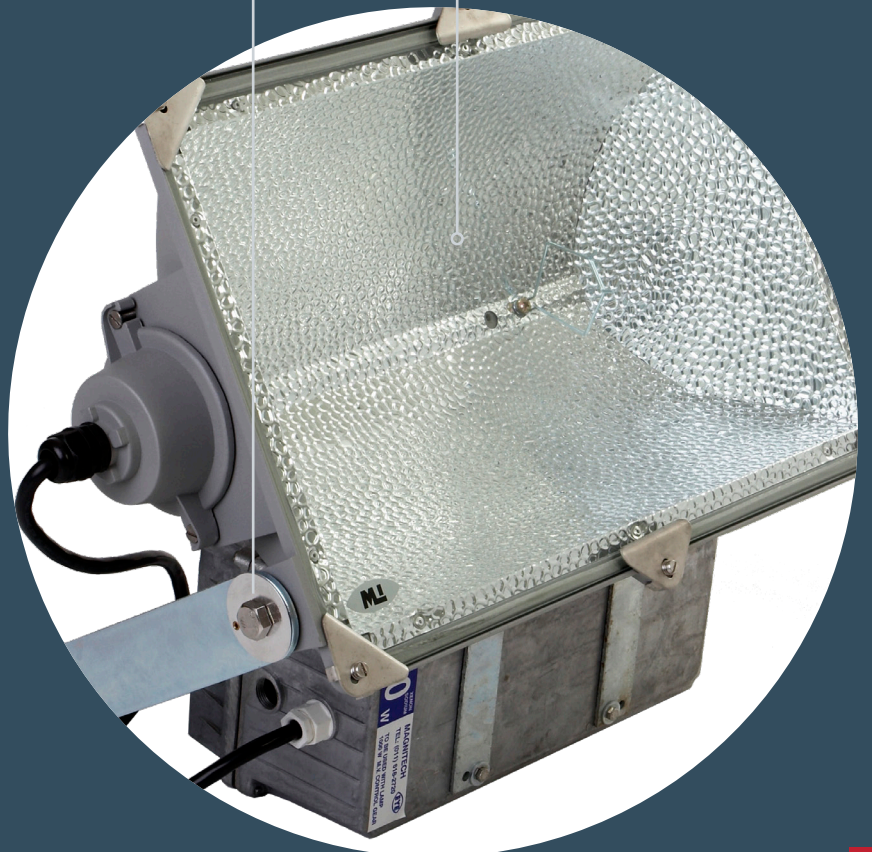
## APPLICATIONS

- Outdoor lighting
- Security lighting
- Industrial lighting
- Sports field lighting
- Construction site lighting
- Advertising billboard lighting



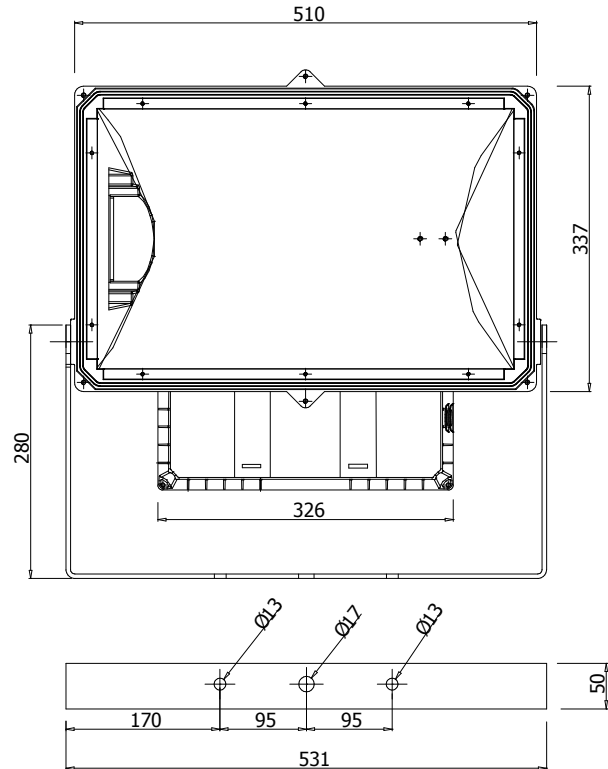
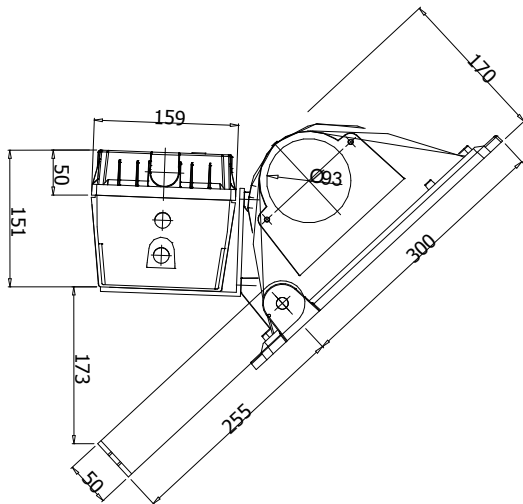
## STANDARDS

- SANS / IEC 60598



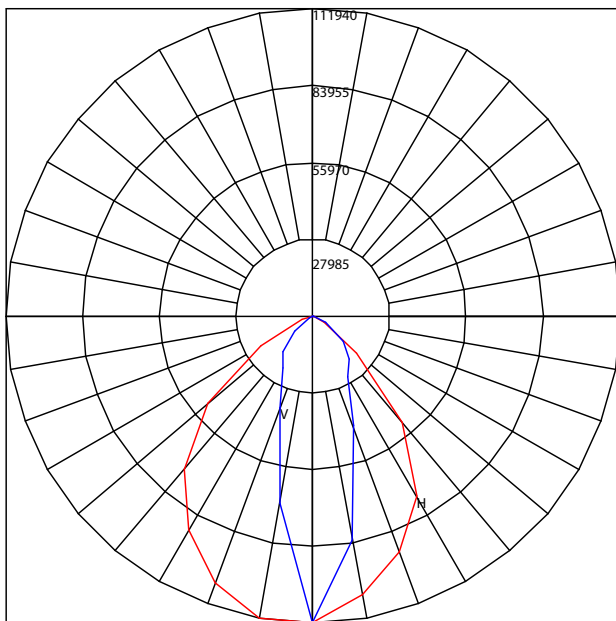


## DIMENSION LINE DRAWINGS



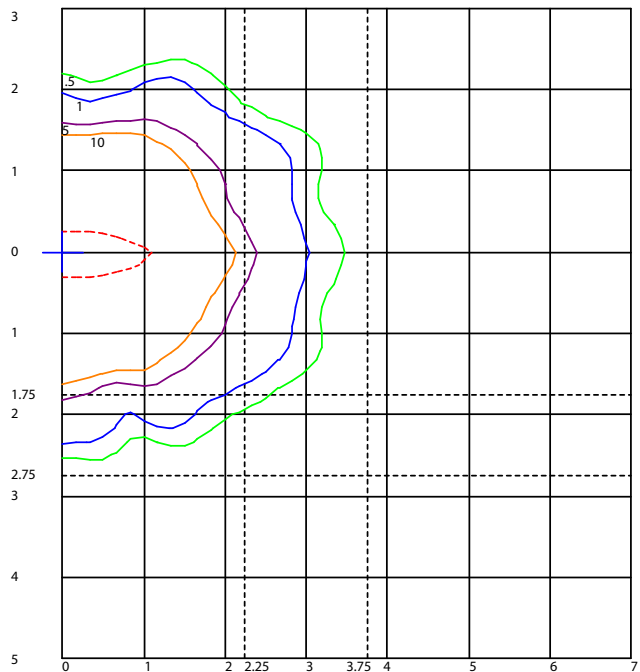
## PHOTOMETRIC DATA

### HP15 1000 HPS-T WB.IES AXIAL CANDELA DISPLAY



Maximum Candela = 111939.5 Located At Horizontal Angle = -10, Vertical Angle = 0  
H - Horizontal Axial Candela  
V - Vertical Axial Candela

### HP15 1000 HPS-T WB.IES SOLUX LINES OF HORIZONTAL ILLUMINANCE



Distance In Units Of Mounting Height  
Values Based On 10 Meter Mounting Height  
1/2 Maximum Candela Trace Shown As Dashed Curve  
(+) = Maximum Candela Point

The photometrics displayed above are one example of various lamps and light sources available for this fitting. Photometrics for other lamp variants are available on request.

## ACCESSORIES

1. Remote gear
2. Anti vibration
3. Stainless steel stud and nut



## ORDERING DATA

### HID OPTIONS

DESCRIPTION	HPS	MH	XENON	WEIGHT
600W	X			19KG
940W			X	18.70KG
1000W	X	X		20.86KG

### LED OPTIONS

LED Options available

SUFFIX	OPTIONS & ACCESSORIES
AV	ANTI VIBRATION
RG	REMOTE GEAR
WB	WIDE BEAM
NB	NARROW BEAM
SN	STAINLESS STEEL STUD AND NUT
TC	TEFLON COATED
PM	POLE MOUNT BRACKET
IG	INTEGRAL GEAR
CR	CORROSION RESISTANT
DG	DOUBLE GLASS

5 RAEBOR ROAD BENROSE JOHANNESBURG 2094  
P.O. BOX 27129 JEPPESTOWN 2043

T: +27 (0)11 618 2720 F: +27 (0)11 614 9603  
E: SALES@MAGNITECH.CO.ZA  
W: MAGNITECH.CO.ZA

Due to continuing R&D, the above data may change without prior notice. Please consult us for the latest available options. Warranties subject to our standard terms and conditions of sale.



**MAGNITECH**  
LIGHTING INDUSTRIES